



United States Department of Agriculture

Agricultural
Research
Service

Technical
Bulletin
Number 1931

September 2013

Long-Term Trends in Ecological Systems: A Basis for Understanding Responses to Global Change



Contents

Contributors	VIII
Technical Consultants	X

Introduction to Cross-Site Comparisons and History and Organization of the EcoTrends Project

Chapter 1: Long-Term Trends in Ecological Systems: An Introduction to Cross-Site Comparisons and Relevance to Global Change Studies	1
Chapter 2: History and Organization of the EcoTrends Project	21

Cross-Site Comparisons of Ecological Responses to Global Change Drivers

Chapter 3: Cross-Site Comparisons of Ecological Responses to Climate and Climate-Related Drivers	28
Chapter 4: Cross-Site Comparisons of State-Change Dynamics	36
Chapter 5: Patterns of Net Primary Production Across Sites	42
Chapter 6: Cross-Site Comparisons of Precipitation and Surface Water Chemistry	46
Chapter 7: Cross-Site Comparisons of Ecological Responses to Long-Term Nitrogen Fertilization	51
Chapter 8: Long-Term Trends in Human Population Growth and Economy Across Sites	54
Chapter 9: Disturbance Regimes and Ecological Responses Across Sites	58
Chapter 10: Cross-Site Studies “By Design”: Experiments and Observations That Provide New Insights	72

Long-Term Trends in Global Change Drivers and Responses at Site and Continental Scales

Chapter 11: Long-Term Trends in Climate and Climate-Related Drivers	81
Chapter 12: Long-Term Trends in Precipitation and Surface Water Chemistry	115
Chapter 13: Long-Term Trends in Human Demography and Economy Across Sites	162
Chapter 14: Long-Term Trends in Production, Abundance, and Richness of Plants and Animals	191
Chapter 15: Management and Policy Implications of Cross- and Within-Site Long-Term Studies	206
Chapter 16: Recommendations for Data Accessibility	216
Chapter 17: Long-Term Research Across Sites, Ecosystems, and Disciplines: Synthesis and Research Needs	226

Appendices

Appendix 1: Site Descriptions	234
Appendix 2: Average (Standard Error) Maximum, Mean, and Minimum Air Temperature and Annual Precipitation at Each Site	312

Appendix 3: Average (Standard Error) Ice Duration, Sea Level, Streamflow, Water Clarity, and Water Temperature for Sites With Data	314
Appendix 4: Regression Coefficients and R ² Values for Nine Climatic Variables for Which Linear Regression Against Time Is Significant (p < 0.05)	316
Appendix 5: Annual Average (Standard Error) Nitrogen (as Nitrate) From Various Sources at Sites With Data	319
Appendix 6: Regression Coefficients and R ² Values for Nitrogen (as Nitrate) From Various Sources for Which Linear Regression Against Time Is Significant (p < 0.05)	321
Appendix 7: Annual Average (Standard Error) Nitrogen (as Ammonium) From Various Sources at Sites With Data	323
Appendix 8: Regression Coefficients and R ² Values for Nitrogen (as Ammonium) From Various Sources for Which Linear Regression Against Time Is Significant (p < 0.05)	325
Appendix 9: Annual Average (Standard Error) Sulfur (as Sulfate) From Various Sources at Sites With Data	326
Appendix 10: Regression Coefficients and R ² Values for Sulfur (Sulfate) From Various Sources for Which Linear Regression Against Time Is Significant (p < 0.05)	328
Appendix 11: Annual Average (Standard Error) Chloride From Various Sources at Sites With Data ..	330
Appendix 12: Regression Coefficients and R ² Values for Chloride From Various Sources for Which Linear Regression Against Time Is Significant (p < 0.05)	332
Appendix 13: Annual Average (Standard Error) Calcium From Various Sources at Sites With Data ...	334
Appendix 14: Regression Coefficients and R ² Values for Calcium From Various Sources for Which Linear Regression Against Time Is Significant (p < 0.05)	336
Appendix 15: Human Population and Economy Variables in 2000 for the Focal County of Each Site, as Grouped by Ecosystem Type	338
Appendix 16: Annual Average (Standard Error) Aboveground Net Primary Production (ANPP) at Sites With Data	341
Appendix 17: Other Measures of Average (Standard Error) Terrestrial Production at Sites With Data..	343
Appendix 18: Average (Standard Error) Aquatic Production at Sites With Data	344
Appendix 19: Average (Standard Error) Biomass of Primary Producers (Plants, Algae) for Sites With Data	345
Appendix 20: Average (Standard Error) Plant Species Richness for Sites With Data	347
Appendix 21: Average (Standard Error) Animal Abundance for Sites With Data	349
Appendix 22: Average (Standard Error) Animal Species Richness for Sites With Data	352
Appendix 23: Regression Coefficients and R ² Values for Plant and Animal Variables for Which Linear Regression of Each Variable Against Time Is Significant (p < 0.05) and the Trend Appears Linear	353
Appendix 24: Lead Principal Investigator(s) (PI), Information Managers (IM), and Administrative Program of the LTER Programs	355
Appendix 25: Researchers Involved in the EcoTrends Project at Non-LTER Sites	359

Appendix 26: List of Stations and Length of Record for Each Climate Variable by Site	362
Appendix 27: List of Stations and Length of Record for Each Precipitation or Surface Water Chemistry Variable by Site	367
Appendix 28: List of Stations and Length of Record for Each Plant and Animal Variable by Site, as Grouped by Ecosystem Type	371
Index	i

Chapter 5

Patterns of Net Primary Production Across Sites

A.K. Knapp, M.D. Smith, D.P.C. Peters, and S.L. Collins

Net primary production (NPP) is a fundamentally important and commonly measured ecosystem process that provides an integrative estimate of energy capture and flow into systems and consequently of the energy available for use by other trophic levels. A wide range of productivity levels occurs globally (figure 5-1) with high temporal dynamics among sites (chapter 14). In this brief overview, we discuss approaches to estimating NPP, highlight site-specific trends in productivity, and provide examples of past synthetic analyses across space and time. We focus on aboveground components of NPP for reasons explained below.

Methods of Measuring and Estimating NPP

In terrestrial ecosystems, NPP includes both aboveground (ANPP) and belowground (BNPP) components. Data and analyses are much more common for ANPP because measuring belowground components is technically difficult (Fahey and Knapp 2007). In general, ANPP in terrestrial systems can be directly measured via destructive harvest or estimated with nondestructive (for example, allometric) techniques. Data in this book include both approaches and, because the units of NPP are usually grams of dry mass (or carbon) per unit area per unit time (usually per year), comparisons across ecosystems are facilitated. In addition to the challenges associated with measuring BNPP, estimating ANPP in forests and NPP in aquatic systems often require techniques that use much different spatial and temporal scales than what is employed in ecosystems dominated by herbaceous plants. For a recent review of the most commonly used and accepted methods of estimating both ANPP and BNPP, see Fahey and Knapp (2007).

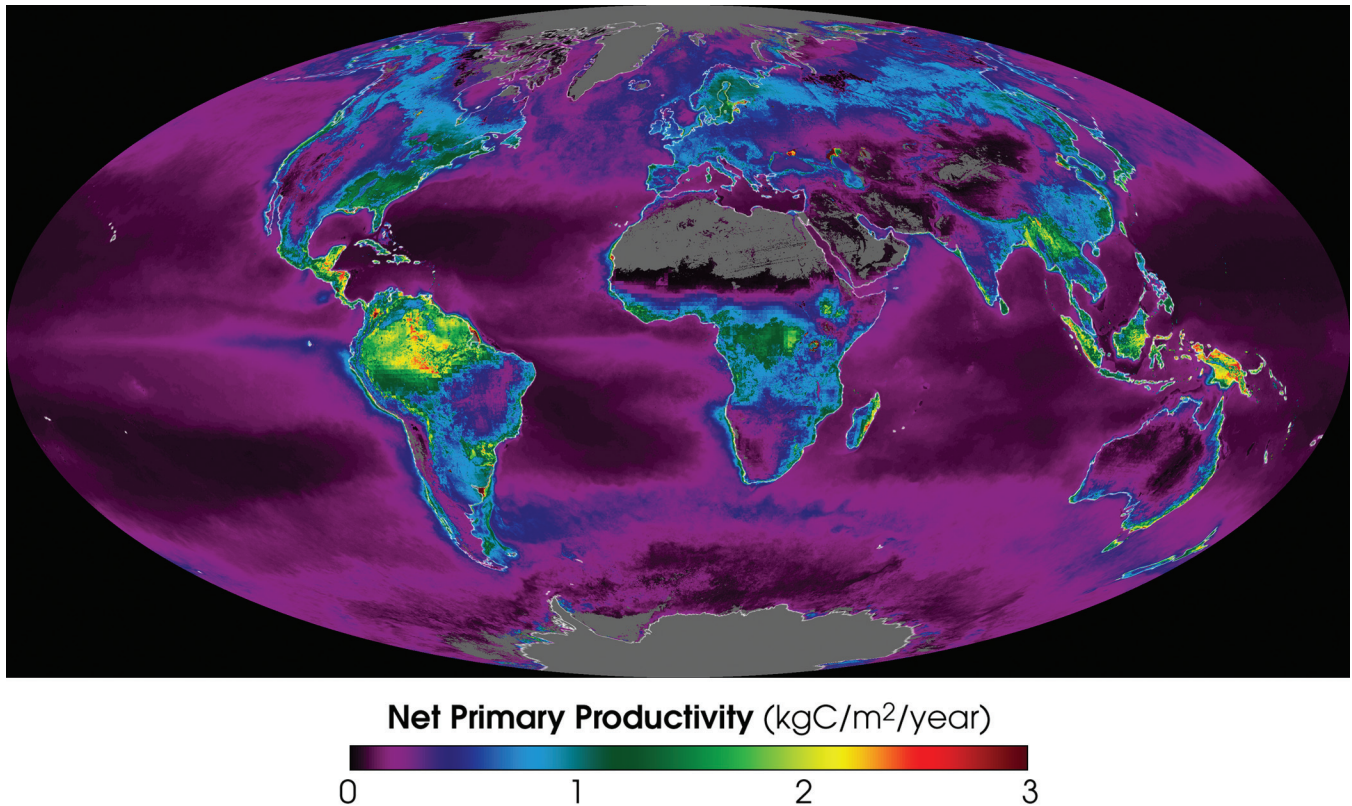


Figure 5-1. Global patterns in annual average net primary production on land and in the ocean in 2002. The yellow and red areas show the highest rates, 2 to 3 kilograms of carbon per square meter per year. The green, blue, and purple shades show progressively lower productivity. (Map from NASA Goddard Space Flight Center, <http://science.hq.nasa.gov/oceans/system/climate.html>.)

Temporal and Spatial Trends in ANPP

For many sites, both increasing and decreasing trends in ANPP are evident over time (figures 14-1 to 14-4) and are often a consequence of disturbance regimes or changes in plant community composition. In many sites, spatial variation among locations within a site can overwhelm temporal variation (figure 5-2). However, strong interannual variation in ANPP over time is not always the rule; instead, trends in ANPP (either positive or negative) can be quite consistent from year to year (figure 5-3). Additional trends in ANPP, surrogates for NPP, and aquatic productivity are included in chapter 14.

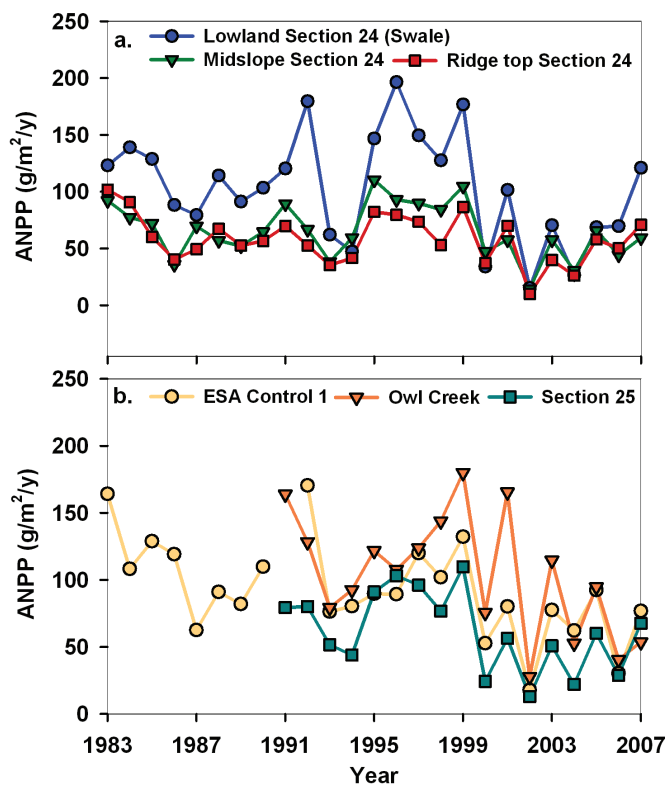


Figure 5-2. Patterns of aboveground net primary production (ANPP) for the Shortgrass Steppe (SGS) from 1983 to 2007 for 6 locations based on topographic position and soil texture from high sand (Owl Creek) to low sand (Pasture 25). (Original data from <http://sgs.cnr.colostate.edu/>; synthesized data from <http://www.ecotrends.info/>.)

Cross-Site Synthetic Analyses

One of the advantages of the EcoTrends database is that it facilitates more comprehensive synthetic analyses of NPP data across space and time. The determinants of differences among sites in NPP quantity and dynamics have long been of interest to ecologists (Rosenweig 1968, Webb et al. 1978). More recent analyses have

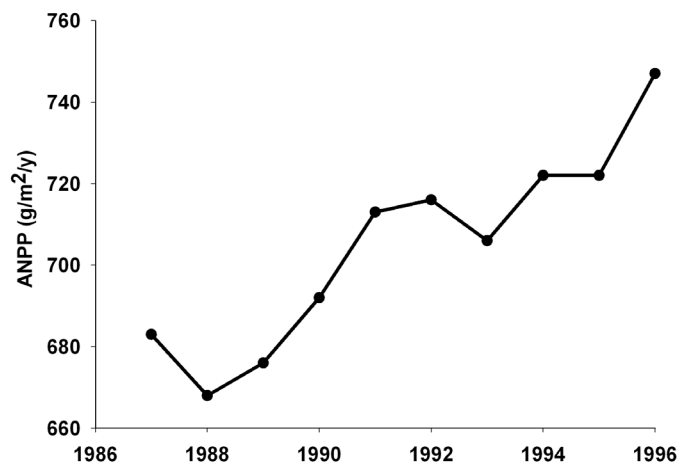


Figure 5-3. Pattern of aboveground net primary production (ANPP) for a mixed deciduous forest site at the Hubbard Brook Ecosystem Study (HBR) site from 1987 to 1996. (Original data from <http://intranet.lternet.edu/cgi-bin/anpp.pl>; synthesized data from <http://www.ecotrends.info/>.)

begun to take advantage of long-term data across sites (Knapp and Smith 2001, Huxman et al. 2004). These analyses have provided key insights into the relative roles of biotic versus abiotic drivers of dynamics as well as elucidating where and when biogeochemical versus climatic factors underlie patterns of NPP across biomes. For example, the strong role that precipitation plays in determining ANPP across grassland sites is clearly evident in a multisite analysis (figure 5-4) (Muldavin et al. 2008). Across a broader range of terrestrial ecosystems, differential sensitivity to mean annual precipitation appears with other limitations (temperature or biogeochemistry) becoming more important in more mesic and productive ecosystems (figure 5-5) (Huxman et al. 2004).

Biotic constraints on ANPP, such as vegetation composition or meristem limitation, can also explain patterns across sites. Lauenroth and Sala (1992) pointed out a space versus time discrepancy when comparing the temporal relationship between ANPP and precipitation at an individual site compared with the same relationship based on ANPP and precipitation across sites (spatial vs. temporal trends, figure 5-6). The shallower slope of the relationship at any one site reflects site-specific vegetation constraints on the capability of the ecosystem to respond to changes in precipitation. A similar pattern can be seen for a broader range of sites (figure 5-5). Shifts in plant species composition within a site, due to woody plant encroachment or invasion of shrubs into grasslands, can dramatically change ANPP at that site (with no change in environmental conditions) as well as alter patterns of ANPP across sites (Knapp et al. 2008).

Long-Term Trends in Ecological Systems:

Another manifestation of how vegetation structure can influence ANPP responses to changes in precipitation was demonstrated by Knapp and Smith (2001) in a multisite synthetic analysis of long-term ANPP data. The interaction between meristem density (low in xeric ecosystems and high in mesic ecosystems) and

interannual variability in precipitation (high in xeric ecosystems and low in mesic ecosystems) resulted in a pattern where the greatest interannual variability in ANPP (CV in figure 5-7) was in grasslands.

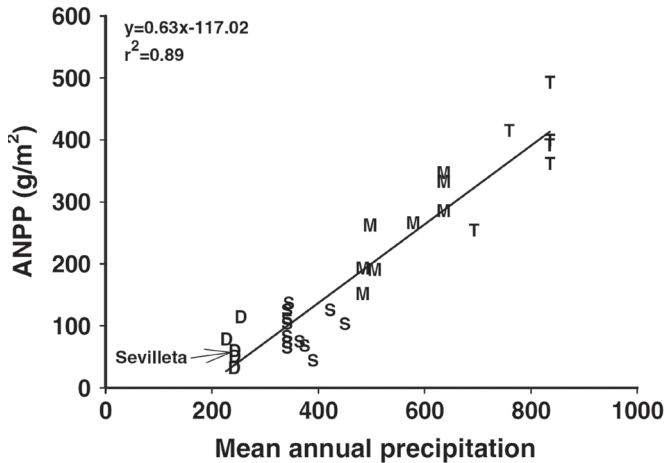


Figure 5-4. Regional comparison of aboveground net primary production (ANPP) and long-term mean annual precipitation for four grassland types: D = desert grassland, S = shortgrass steppe, M = mixedgrass prairie, T = tallgrass prairie (Muldavin et al. 2008). The Sevilleta site is identified. Reprinted with permission from Springer Science+Business Media.

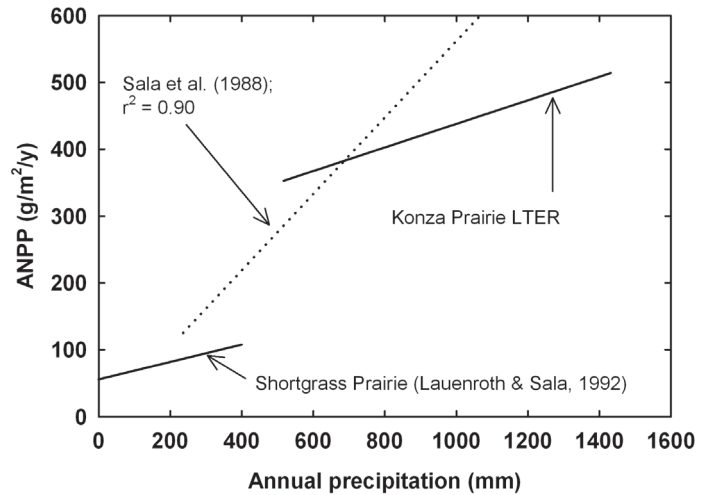


Figure 5-6. Aboveground net primary production (ANPP) has a different relationship with mean annual precipitation for sites located across a rainfall gradient (dashed line) compared with the relationship between ANPP and precipitation in each year for two sites (solid lines): the Shortgrass Steppe (SGS) site (Sala et al. 1988, Lauenroth and Sala 1992) and the Konza Prairie Biological Station (KNZ) site (Knapp et al. 1998). Reprinted with permission from Oxford University Press, Inc.

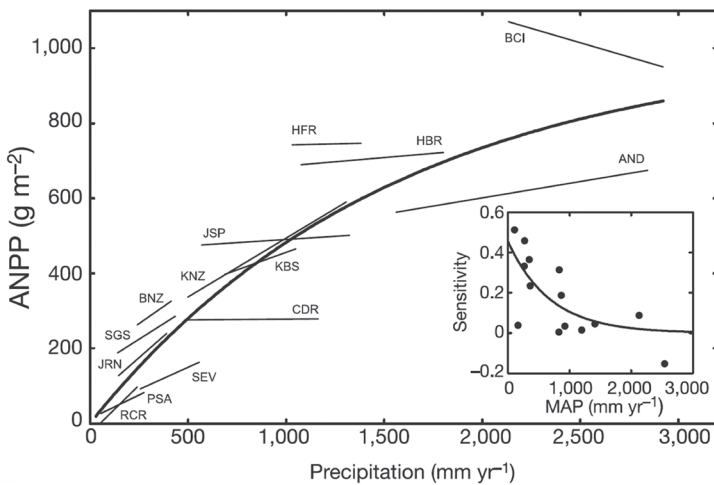


Figure 5-5. Between-year variation in aboveground net primary production (ANPP) across a precipitation gradient for 14 sites. Site-specific relationships developed using linear regression (Huxman et al. 2004). The overall relationship (bold line) shown for all sites: $ANPP = 1011.7 \times (1 - \exp[-0.0006 \times PPT])$; $r^2 = 0.77$; $P < 0.001$. Inset shows site-level slopes of ANPP versus annual precipitation as a function of mean annual precipitation (MAP). Reprinted with permission from Macmillan Publishers Ltd.

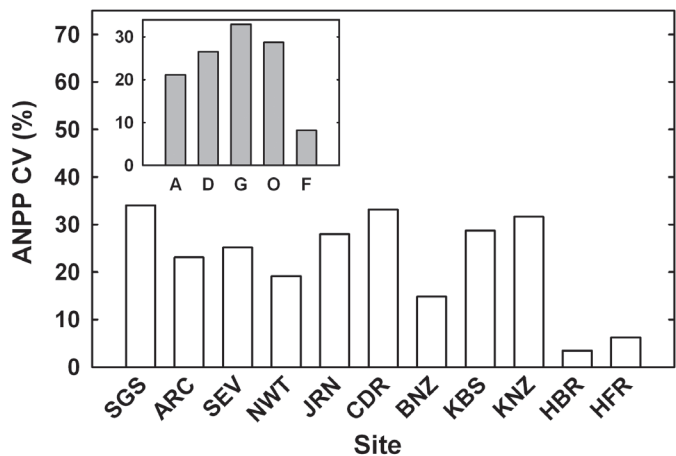


Figure 5-7. Comparison of the temporal coefficient of variation (CV) in aboveground net primary production (ANPP) for 11 sites. Inset shows CV data combined by biome type: A = arctic and alpine sites, D = desert sites, G = grassland sites, O = old fields, F = forest sites (Knapp and Smith 2001). Reprinted with permission from AAAS.

Future Analyses

In a changing world where both global and local changes in climate and nutrient deposition are affecting resources that influence NPP (chapters 11, 12), a re-assessment of past studies and assumptions is warranted, and many questions remain to be addressed (Smith et al. 2009):

- How do the dynamics and amplitude of change in NPP vary across a broad range of ecosystems?
- What are the key drivers of NPP change and dynamics? Is there convergence among ecosystems to a few key drivers?
- How can we more directly compare patterns and controls of NPP in terrestrial and aquatic systems?
- How do ecosystems vary in their sensitivity to their drivers, and is there predictive value in this sensitivity?

Conclusions

Understanding patterns and controls of NPP have been a long-standing challenge for ecological research. This challenge remains a core research area for many sites. As the number of comparable long-term datasets across ecosystems grows, answers to these and other key questions about NPP will be possible in the future.

References

Fahey T.J., and A.K. Knapp 2007. Principles and Standards for Measuring Net Primary Production. Oxford University Press, New York, NY.

Huxman T.E., M.D. Smith, P.A. Fay, et al. 2004. Convergence across biomes to a common rain-use efficiency. *Nature* 429:651-654.

Knapp, A.K., J.M. Briggs, J.M. Blair, et al. 1998. Patterns and controls of aboveground net primary production in tallgrass prairie. *In* A.K. Knapp, J.M. Briggs, D.C. Hartnett, et al., eds., *Grassland Dynamics: Long-Term Ecological Research in Tallgrass Prairie*, pp. 193-221. Oxford University Press, New York, NY.

Knapp A.K., and M.D. Smith. 2001. Variation among biomes in temporal dynamics of aboveground primary production. *Science* 291: 481-484.

Knapp, A.K., J.M. Briggs, S.L. Collins, et al. 2008. Shrub encroachment in North American grasslands: Shifts in growth form dominance rapidly alters control of ecosystem carbon inputs. *Global Change Biology* 14:615–623.

Lauenroth, W.K., and O.E. Sala. 1992. Long-term forage production of North American shortgrass steppe. *Ecological Applications* 2:397-403.

Muldavin, E.H., D.I. Moore, S.L. Collins, et al. 2008. Aboveground net primary production dynamics in a northern Chihuahuan Desert ecosystem. *Oecologia* 155: 123-132.

Rosenzweig, M.L. 1968. Net primary productivity of terrestrial communities: prediction from climatological data. *American Naturalist* 102:67-74.

Sala, O.E., W.J. Parton, L.A. Joyce, et al. 1988. Primary production of the central grassland region of the United States. *Ecology* 69:40-45.

Smith, M.D., A.K. Knapp, S.L. and Collins. 2009. A framework for assessing ecosystem dynamics in response to chronic resource alterations induced by global change. *Ecology* 90:3279-3289.

Webb, W.L., S. Szarek, W.K. Lauenroth, et al. 1978. Primary productivity and water use on native forest, grassland, and desert ecosystems. *Ecology* 59:1239-1247.

