



Accuracy of regional-to-global soil maps for on-farm decision making: Are soil maps “good enough”?

Jonathan J. Maynard¹, Edward Yeboah², Stephen Owusu², Michaela Buenemann³, Jason C. Neff¹, and Jeffrey E. Herrick⁴

5 ¹ Sustainability Innovation Lab, University of Colorado, Boulder, Colorado, United States of America

² CSIR-Soil Research Institute, Kwadaso, Kumasi, Ghana

³ Department of Geography, New Mexico State University, Las Cruces, New Mexico, United States of America

⁴ Jornada Experimental Range, Agricultural Research Service, United States Department of Agriculture, Las Cruces, New Mexico, United States of America

10

Correspondence to: Jonathan J. Maynard (jonathan.maynard@colorado.edu)

Abstract. A major obstacle to selecting the most appropriate crops and closing the yield gap in many areas of the world is a lack of site-specific soil information. Accurate information on soil properties is critical for identifying soil limitations and the management practices needed to improve crop yields. However, acquiring accurate soil information is often difficult due to the high spatial and temporal variability of soil properties at fine scales and the cost and inaccessibility of laboratory-based soil analyses. With recent advancements in predictive soil mapping, there is a growing expectation that soil map predictions can provide much of the information needed to inform soil management. Yet, it is unclear how accurate current soil map predictions are at scales relevant to management. The main objective of this study was to address this issue by evaluating the site-specific accuracy of regional-to-global soil maps, using Ghana as a test case. Four web-based soil maps of Ghana were evaluated using a dataset of 6,514 soil profile descriptions collected on smallholder farms using the LandPKS mobile application. Results from this study revealed that publicly available soil maps in Ghana lack the needed accuracy (i.e., correct identification of soil limitations) to reliably inform soil management decisions at the 1-2 ha scale common to smallholders. Standard measures of map accuracy for soil texture class and rock fragment class showed that all soil maps had similar performance in estimating the correct property class, with overall accuracies ranging from 8-39% for soil texture classes and 26-33% for soil rock fragment classes. Furthermore, there were substantial differences in soil property predictions among the four maps, highlighting that soil map errors are not uniform between maps despite their similar overall accuracies. To better understand the functional implications of these soil property differences, we used a modified version of the FAO Global Agro-Ecological Zone (GAEZ) soil suitability modelling framework to derive soil suitability ratings for each soil data source. Using a low-input, rain-fed, maize production scenario, we evaluated the functional accuracy of map-based soil property estimates. This analysis showed that soil map data significantly overestimated crop suitability for over 65% of study sites, potentially leading to ineffective agronomic investments by farmers, including cash-constrained smallholders.

15
20
25
30



35 c

1. Introduction

Site-specific soil information is urgently needed to address a variety of critical issues affecting agricultural systems, including soil fertility, erosion control, water management, and climate mitigation (Montanarella et al., 2015). Variability in both relatively static soil properties (such as clay content and depth) and current soil health (i.e., status of dynamic properties like fertility) is known to affect agricultural productivity. However, the lack of accurate information on soil physical and chemical properties has complicated or limited opportunities for smallholder farmers to improve soil health through appropriate soil management practices (e.g., targeted fertilizer application). Smallholder farmers (i.e., farms <2 ha) cultivate 24% of agricultural land globally, yet generate 30-34% of the global food supply due to a higher percentage of agricultural production devoted to food crops (Ricciardi et al., 2018). With the development of improved crop varieties, smallholder farmers in many regions of the world have realized significant yield gains (e.g., Asia, Latin America) (Ritchie and Roser, 2013). While other areas, notably sub-Saharan Africa, have failed to realize appreciable yield increases due to underlying biophysical constraints on crop production, principally soil infertility and the long-term depletion of soil nutrient (Sanchez, 2015).

Smallholder farmers in Ghana are faced with a wide array of soil management challenges that affect the economic use of their soils. These challenges include low inherent fertility status, poor drainage, concretions and stoniness, shallow rooting depths, aluminium toxicity in acid soils, and susceptibility to both erosion and drought (Obeng, 1976; Obiri-nyarko, 2012). In many of Ghana's major agricultural areas, increasing population pressure and inappropriate land use has contributed to extensive land degradation. Current agricultural yields in Ghana are far below their production potential. For example, average maize yield is around 1.7 tons per hectare, approximately one-quarter of the 6.0 tons/ha target set by Ghana's Ministry of Food and Agriculture (Chapoto and Tetteh, 2014). To overcome these challenges and increase crop yields, farmers must adopt improved production strategies, including the use of fertilizers, the planting of improved cultivars, and the adoption of good agricultural practices (Fening, 2018). However, many soils in Ghana have severe constraints that limit the effectiveness of these production strategies, and without accurately identifying and addressing these soil limitations, smallholder farmers may fail to see a return on their investment. Accurate site-specific soil data could improve smallholder farmers' decisions and actions on sustainable agricultural practices and soil fertility management and thus lead to higher productivity potential.

A major challenge to obtaining accurate site-specific soil data is the high spatial and temporal variability of soil properties in many areas of the world. Soil variability results from differences in environmental factors (e.g., topography, geology, climate) that affect soil property formation over time (Bouma and Finke, 1993). The spatial scale and intensity at which these environmental factors vary determine the degree of soil variability within a landscape. Variation in certain soil properties can also result from the effects of management activities. For example, tillage and drainage of agricultural fields,



crop rotation, application of fertilizers, and irrigation practices can all affect dynamic soil property values (e.g., organic matter, pH, plant nutrient availability), particularly near the surface. Erosion and deposition can also affect what are typically considered static soil properties, such as texture and depth (Mulla and McBratney, 2001).

- 70 Ideally, smallholder farmers would be able to characterize the variability of their soils using laboratory-based physical and chemical analyses. In reality, high cost, limited access, and slow turnaround times have prevented most farmers from obtaining and using detailed soil laboratory information, while limited crop- and soil-specific knowledge have constrained the use of this information. Soil maps have been widely viewed as at least a potential solution to this information gap, resulting in continued efforts to improve the spatial resolution and accuracy of soil map information (Brevik et al., 2015).
- 75 While recent advancements in soil mapping allow for the prediction of soil information at management-relevant scales, the utility of those predictions depends on how accurately they portray fine-scale (i.e., 1-2 ha) soil variability. Failure to accurately characterize soil variability at the farm or field scale can severely limit the reliability of land suitability assessments (i.e., fitness for a specific land utilization type, e.g., low-input, rain-fed wheat), and thus the ability to identify soil limitations and/or the conditions suitable for sustainable agricultural intensification.
- 80 Soil maps characterize spatial variability using either conventional or predictive soil mapping techniques. Conventional soil maps partition a landscape into finite circumscribed regions (i.e., soil map units), where boundaries are sharp lines delineating clear differences in soil types (Heuvelink and Webster, 2001). Conventional soil maps use empirical, expert-based models to delineate the location and extent of soil types. These empirical models are often based on local geomorphology and vegetation patterns and validated by direct observation. The typical ranges of soil properties encountered for each soil type are established based on representative soil profiles and expert knowledge. In contrast,
- 85 predictive soil maps characterize soil properties and classes (i.e., class probabilities) as continuous modelled values at a fixed grid cell resolution across a mapping area. Predictive soil maps are created from numerical or statistical models based on relationship among environmental variables and soil properties or classes. These models often use legacy soil profile data and remotely sensed environmental covariates (e.g., slope, normalized difference vegetation index [NDVI]) that approximate
- 90 soil forming factors (e.g., topography, climate, geology, vegetation). Predictive soil maps are driven by modelling of spatial data and therefore limited by both the point data available for training/validation and the covariate data used for model development.

For many smallholder farmers, obtaining actionable soil information from soil maps is an attractive option. Multiple sources of soil map information raise several important questions for end-users, including: How accurate are soil maps at my farm?

- 95 Which soil map product is the most accurate? Can I use soil map information to inform my soil management decisions? Answers to these questions require an understanding of site-specific soil accuracy as it relates to both the relative accuracy of soil map information (i.e., compared to soil profile measurements) and the levels of soil map accuracy required for different land management applications (i.e., functional assessment).

This study evaluated the site-specific accuracy of four publicly available web-based soil maps of Ghana (Harmonized World Soil Database, World Inventory of Soil Property Estimates, SoilGrids250m, and iSDAsoil) using a dataset of 6,514 soil

100



profile descriptions collected on smallholder farms using the LandPKS mobile application ('app') (Herrick et al., 2013). We evaluated three static soil properties (reflecting the long-term potential of the soil): soil texture class (USDA), rock fragment volume class, and soil depth (i.e., depth to bedrock). These properties directly affect agricultural production and can be used to inform farmer decisions on a variety of management practices such as irrigation frequency and erosion control. They also determine how susceptible soils are to declines in fertility and how responsive they are likely to be to different types and amounts of fertilizer and organic amendments such as compost and manure. We used standard measures of classification accuracy to assess the relative accuracy of each soil map. To help further contextualize these soil property differences, we used a modified version of the Global Agro-Ecological Zone (GAEZ) soil suitability modelling framework to derive soil suitability ratings for each soil data source (Fischer et al., 2008). Using a low-input, rain-fed, maize production scenario, we evaluated the functional accuracy of map-based soil property estimates relative to site-based measurements. The main objective of this study was to improve our understanding of differences in soil map products, the relation of these products to field observations, and the functional accuracy of soil map data for informing soil management recommendations.

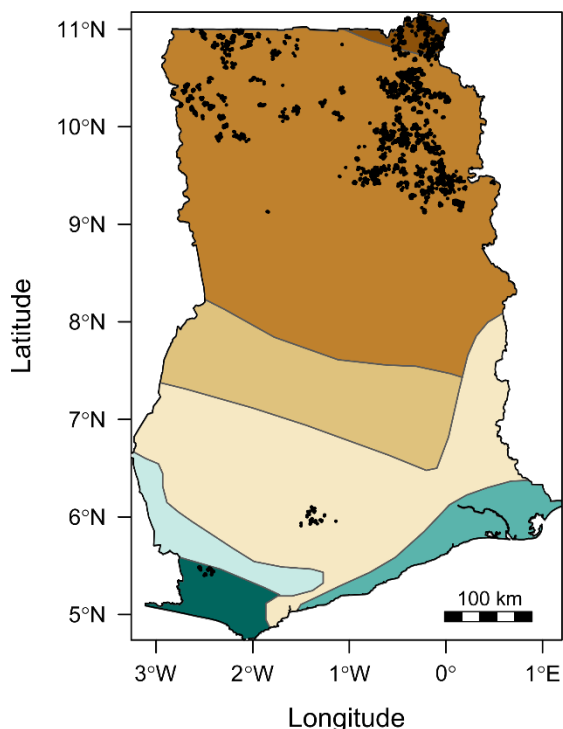
2. Methods

2.1 Study Area

The study was conducted in Ghana, West Africa, within the Northern, Upper West, and Upper East regions in northern Ghana and the Western and Ashanti regions in southern Ghana (Fig. 1). The study area spans four agro-ecological zones, the Guinea Savannah and Sudan Savannah in the north and the Deciduous Forest and Wet Evergreen Rainforest in the south. The northern agro-ecological zones have a unimodal rainfall pattern with a mean annual rainfall of 1,100 mm, resulting in a single growing season from July to September. Agro-ecological zones in the south have a bimodal rainfall pattern and receive between 1500- and 2200-mm rainfall per annum, resulting in a major and minor cropping season. Soils in northern Ghana are predominantly Plinthisols and Planosols with smaller areas of Lixisols and Luvisols (Adjei-Gyapong and Asiamah, 2002; Awadzi and Asiamah, 2002). Soils in southern Ghana are predominantly Ferralsols and Acrisols, with smaller areas of Lixisols, Alisols, and Nitisols. Except for Luvisols in the north and Nitisols in the south, most soil types in Ghana have moderate-to-severe limitations for crop production, including low fertility (Acrisols, Alisols, Ferralsols, Lixisols), aluminum toxicity (Acrisols, Alisols, Planosols), shallow rooting depth (Plinthosols), high erosion risk (Alisols), and susceptibility to drought (Acrisols, Alisols, Ferrasols, Plinthosols).



(a) Agro-ecological Zones



(b) Maize Production

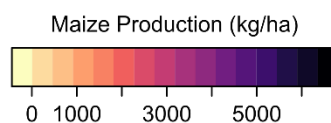
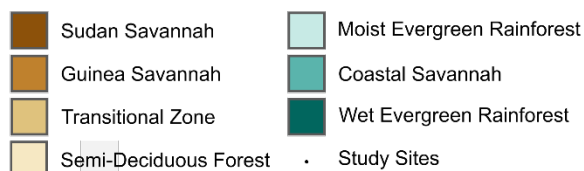
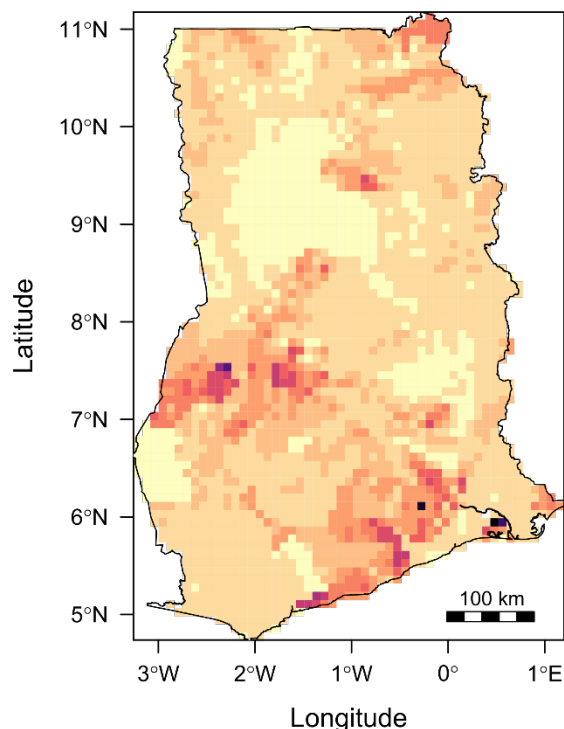


Figure 1. Maps of Ghana showing (a) the location of LandPKS sampling sites underlain by Agro-ecological Zones and (b) the yield (kg./ha) of maize growing areas.

130

2.2 Soil map acquisition and processing

Four soil mapping products were evaluated in this study: two conventional soil maps (i.e., Harmonized World Soil Database v1.21 [HWSD]; World Inventory of Soil Emission Potential 30 arc second map v1 [WISE]) and two predictive soil maps (i.e., SoilGrids250 v2 [SoilGrids]; iSDAsoil v1 [iSDA]) (Table 1). Conventional soil maps do not show the exact location of a soil type but instead display Soil Map Units (SMUs) representing distinct areas of a landscape composed of one or more soil types (i.e., soil map unit components). A common method for dealing with this spatial uncertainty is to assign any location within a SMU to its dominant soil component. In our comparisons of soil property values, we used the property

135



values associated with the dominant SMU component from the HWSD and WISE maps. In Ghana, HWSD is derived from the FAO-UNESCO Digital Soil Map of the World (DSMW) which has a map scale of 1:5,000,000 (translates to a spatial resolution of ~2.5 km). HWSD soil property data is derived using soil profile data from the WISE soil profile database and pedotransfer rules, producing two aggregated soil depth intervals (0-30 and 30-100 cm) (Nachtergaele et al., 2009). The WISE soil map is a recent improvement upon HWSD, where an expanded WISE soil profile database and new pedotransfer rules were used to derive soil profile data at seven standardized depth intervals (0-20, 20-40, 40-60, 60-80, 80-100, 100-150, 150-200 cm). HWSD and WISE have identical spatial data (map scale: 1:5,000,000; spatial resolution: ~2.5 km) but differ in their soil property data (2 vs 7 depths for HWSD and WISE, respectively) (Batjes, 2016). Predictive soil mapping products (e.g., SoilGrids, iSDA) offer an alternative to conventional soil maps by providing predictions of soil properties and classes at specific locations. SoilGrids is a global predictive soil map that predicts soil properties at a 250 m spatial resolution at six standard depths (0-5, 5-15, 15-30, 30-60, 60-100, and 100-200 cm) (de Sousa et al., 2020). iSDA is a predictive soil map of Africa that predicts soil properties at a 30 m spatial resolution at two standard depths (0-20, 20-50 cm) (Hengl et al., 2021). Soil map data was obtained from online repositories. Soil map predictions for sand, silt, and clay percentage, rock fragment volume, and depth to bedrock were extracted from each map at all 6,514 sampling locations. For SoilGrids, depth to bedrock values were extracted from SoilGrids version 1.0 since no new map predictions were available for version 2.0. Among the soil data sources, the maximum prediction depth was shallowest for iSDA at 50 cm (Table 1). To facilitate comparison between the different soil data sources, we segmented each soil profile into 1 cm slices and then aggregated the slices (depth-weighted average) using a standard set of depth intervals (i.e., 0-10, 10-20, 20-50 cm). The maximum soil depth for each data source was set at 50 cm to ensure all data sources had soil property values at each depth interval in our comparison (Fig. 2). The segmenting algorithm was implemented using the ‘aqp’ package for R (Beaudette et al., 2013). For each reaggregated soil depth interval, we calculated soil texture class based on USDA texture classes and rock fragment volume class based on the LandPKS rock fragment class intervals (i.e., 0-1, 1-15, 15-35, 35-60, and >60%).

160

Table 1. Soil data sources in Ghana

| Soil Data | Version | Spatial Extent | Scale / Resolution | Map-unit | Spatial Support | Depth support |
|-----------|----------|----------------|--------------------|----------|-----------------|--|
| HWSD | 1.21 | Global | 1:5,000,000 | Polygon | Area | 2 layers: 0-30, 30-100 cm |
| WISE | 1.0 | Global | 1:5,000,000 | Polygon | Area | 7 layers: 0-20, 20-40, 40-60, 60-80, 80-100, 100-150, 150-200 cm |
| SoilGrids | 1.0, 2.0 | Global | 250 m | Raster | Point | 6 layers: 0-5, 5-15, 15-30, 30-60, 60-100, 100-200 cm |
| iSDA | 1.0 | Africa | 30 m | Raster | Point | 2 layers: 0-20, 20-50 cm |
| LandPKS | 2.1.0 | Field | <1 m | Point | Point | 5 layers: 0-1, 1-10, 10-20, 20-50, 50-70 cm |

Map scale of 1:5,000,000 translates to a spatial resolution of approximately 2.5 km.



165 **2.3 Field data collection**

Soil profiles were sampled as part of two different monitoring and evaluation (M&E) surveys of smallholder farmers in Ghana: USAID’s Feed the Future (FTF) project (Northern Ghana) and a World Bank funded research project, Map to the Future (M2F) (Southern Ghana). The FTF project used a cross-sectional multi-stage cluster sampling design, using probability proportional to size sampling to select smallholder farms (ref). At each selected farm a single representative site (i.e, visually assessed to represent the average biophysical condition) was selected at each farm for soil sampling (farms/soil profiles=6,289). The M2F project used a conditioned Latin hypercube sampling design (cLHS) to select a subset of smallholder farmers participating in an agricultural advisory pilot project (FarmGrow: ref). Baseline agronomic information (e.g., agricultural practices, soil condition, annual yield) was used to stratify the cLHS subsampling. At each selected farm in the M2F project, three soil profiles were sampled from each farm field, with sampling locations chosen by the farmer to reflect within-field soil variability (farms=75, soil profiles=225).

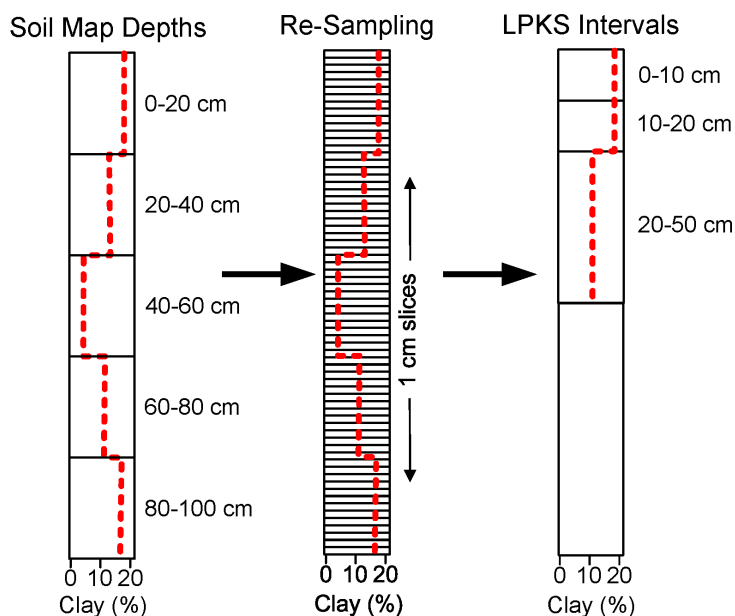


Figure 2. Soil profile slicing and aggregation method for converting contrasting soil sampling depths to the standard LandPKS sampling depths for all properties, showing an example of clay percentage.



180 Data collection was performed using the LandPKS mobile app by field crews following standard sampling protocols (Zalisk
et al., 2018; <https://landpotential.org/knowledge-hub/>). This involved sampling of soils by either hand auger (northern
Ghana) or from soil pits (southern Ghana) at 5 standard depth intervals (i.e., 0-1, 1-10, 10-20, 20-50, 50-70 cm). Soil
samples were passed through a 2 mm sieve and analysed for soil texture (USDA textural classification) using the hand
texturing method (Schoeneberger et al., 2012) and rock fragment volume (i.e., volume percent of rock fragments >2mm)
185 class (i.e., 0-1%, 1-15%, 15-35%, 35-60%, >60%) using visual estimates (USDA-NRCS, 2020). Depth to bedrock was also
recorded if encountered within the 70 cm sampling depth.

While most soil map predictions are derived from laboratory-based property measurements (e.g., HWSD, WISE, SoilGrids),
several recent studies have shown field-estimated soil property values can produce relatively accurate estimates when
compared to laboratory measurements (Salley et al., 2018; Vos et al., 2016). For example, Salley et al. (2018) reported that
190 professional soil scientists and field technicians correctly estimated laboratory-determined texture classes for 66% and 41%
of samples, respectively. And when a ‘correct’ prediction also included adjacent textural classes, accuracies increased to
91% and 78% for professionals and field technicians, respectively (Salley et al., 2018). The compatibility of these different
measurement methodologies was recently demonstrated with the iSDA soil maps which used both laboratory and field-based
measurements to predict soil texture and rock fragment volume (Hengl et al., 2020).

195 All data recorded in the LandPKS app were synchronized to a cloud-based data storage system. Soil profile data were
downloaded from the LandPKS data portal (<https://landpotential.org/data-portal/>, accessed Nov 6, 2020). Quality control
filtering was performed on LandPKS data to remove incomplete sites. This included removing sites with missing soil
property data and sites that were not sampled at all 5 depth intervals.

2.4 Soil evaluation datasets

200 In developing our soil map evaluation procedure, we identified two issues that needed to be addressed. First, the LandPKS
soil data from the FTF project (6,289 sites) were used as part of the iSDA model calibration/training dataset, and therefore
could not be used for independent evaluation of the iSDA map predictions (Hengl et al., 2020). The second issue was with
the spatial support of the soil map accuracy assessment. Since most of the smallholder farms evaluated in this study (i.e.,
FTF project in northern Ghana) were sampled at only one location, most sites could only be evaluated at point-support (i.e.,
205 individual site value vs. predicted map value). The M2F study sites, although a considerably smaller dataset (n=225) and
concentrated in southern Ghana, were not used in the iSDA model and each farm contained three soil profile observations
allowing for both an independent accuracy assessment of iSDA predictions and for accuracy assessments at both point and
field-support. Consequently, we evaluated three different datasets to account for these issues: (1) the entire dataset at point-
support [FTF-M2F-PS: 6,514 study sites], (2) the M2F dataset a point-support [M23F-PS: 225 study sites], (3) the M2F
210 dataset at field-support [M2F-FS: 75 farms].



2.5 Soil map accuracy assessment at field-support

To calculate accuracy measures at field-support we need to compare the average of site values within a field to the average of all predicted map values within a field. For the study sites from the M2F research project in southern Ghana, the exact boundaries of each field were not available. Consequently, we approximated the area of each field by creating a convex hull around each set of sampling points ($n=3$) and then applied a 10 m buffer around the perimeter of each delineated area. Using the approach described by Bishop et al. (2015), each buffered area was then discretised into a 10 m grid, with the center of each grid converted to a point and used for extracting soil map predictions. A 10 m grid was chosen to ensure representative sampling of the soil maps across all grid resolutions. The values extracted at each point were then averaged, giving an approximate area weighted average for each sub-field delineation. The average measured field values were obtained by averaging values from the three soil profiles within each field.

2.6 Soil map evaluation methods

We evaluated the relative and functional accuracy of the soil maps using two different methods, (1) matching of soil property classes (relative accuracy), and (2) matching of crop-specific GAEZ soil suitability ratings (functional accuracy).

2.6.1 Soil property class match

The soil property class match approach applies an exact matching criterion where the measured soil property class at each site and soil depth is compared to the predicted property class in each soil map. Because this approach requires an exact match it can result in a high rate of misclassification among similar soils and therefore provides a conservative measure of map accuracy. We addressed this with a second measure that also considers all adjacent property classes to be correct. For this method, we evaluated map accuracy for soil texture and rock fragment volume classes.

Map performance was evaluated using overall map accuracy, adjacent-overall accuracy, producer's accuracy, and balanced error rate. Overall map accuracy (OA) is the proportion of all observation points at which the map predicts the correct soil property class (i.e., soil texture class, rock fragment volume class). Adjacent-overall accuracy (OA-adj) includes all property classes adjacent to the correct class as a 'correct' prediction. Producer's accuracy (PA) and user's accuracy (UA) are calculated separately for each class. PA is the probability that a ground reference test sample is classified correctly in the map (e.g., ground reference test sample was a clay loam and the corresponding map pixel was classified as clay loam). UA is the probability that a sample from a map actually represents that category on the ground (e.g., map sample was a silt loam and the corresponding ground reference test sample was also a silt loam). The balanced error rate (BER) is the average of the errors in each property class.



2.6.2 Global Agro-Ecological Zone soil suitability

240 Assessing map accuracy based on the soil property class match rate fails to account for when the predicted class is functionally similar to the measured class. In other words, sometimes misclassification of a soil property simply does not matter much for management. For example, a sand texture misclassified as a loamy sand would be functionally more similar than a sand texture misclassified as a sandy clay. To account for these relative differences, we evaluated the functional similarity between data sources using the GAEZ soil suitability modelling framework. The GAEZ framework, developed by 245 the Food and Agriculture Organization of the United Nations (FAO) and the International Institute for Applied Systems Analysis (IIASA), uses soil data and detailed agronomic knowledge to quantify land productivity and crop-specific agronomic potential (Geze Toth, Bartosz Kozłowski, Sylvia Prieler, 2012). GAEZ soil suitability calculations follow a two-step approach, where (1) cropping system-specific responses (i.e., unique combination of crop type, management level, and water supply) to individual soil properties are combined into soil quality ratings, and (2) individual soil quality ratings are 250 combined to calculate management-specific soil suitability ratings. The soil suitability ratings serve as a functional metric for comparing differences in the soil property predictions between the different soil maps. The GAEZ soil quality framework uses multiple soil properties to calculate each of the soil quality indices, including: soil nutrient availability ($SQ_N = f(\text{soil texture, organic carbon, pH, and total exchangeable bases})$); soil rooting conditions ($SQ_R = f(\text{soil depth, soil phases})$); and soil workability ($SQ_W = f(\text{soil depth, texture, rock fragments, soil phases, vertic soil properties})$).

255 We used a simplified version of the GAEZ soil suitability modelling framework to translate soil property information at each site into crop-specific soil suitability ratings for each soil data source. Our modified GAEZ framework used a low-input, rain-fed, maize production scenario to calculate simplified soil quality indices using soil texture class, rock fragment class, and soil depth as input properties. We used maize as our modelled crop due to its widespread cultivation throughout Ghana (Fig. 1) and our selection of input soil properties was limited by those properties common to all data sources. Soil property 260 values at each site were used to calculate three different soil quality indices (SQs): soil nutrient availability (SQ_N), soil rooting conditions (SQ_R), and soil workability (SQ_W). Each soil quality index has its own unique set of soil properties ratings based on their relative influence. SQs: $SQ_N =$ soil texture, organic carbon, pH, and total exchangeable bases; $SQ_R =$ soil depth, soil phases; $SQ_W =$ soil depth, texture, rock fragments, soil phases, vertic soil properties. Since soil texture, rock fragments, and soil depth were the only properties 265 was the only common property among all datasets and therefore used to calculate SQ_N

The natural availability of soil nutrients is critical for crop productivity in low-input farming systems. Soil texture class was used as an indicator of rock-derived nutrient availability, with finer textured soils (e.g., clay) typically having higher nutrient availability than coarse textured soils (e.g., sand). The rock-derived nutrients include phosphorus, micro-nutrients, and base cations, and many of these nutrients are associated with specific mineralogy and tend to be less concentrated in sandy soils 270 (Sollins et al., 1988). In contrast, nitrogen is substantially influenced by nitrogen fixation and soil organic matter content. Soil nutrient availability was calculated as:



$$SQ_N = STR, \quad (1)$$

where STR is the soil texture class rating. Soil rooting condition assesses the effective soil depth and volume for crop roots by accounting for the effects of soil depth, soil texture, and rock fragments volume. The soil rooting condition index was calculated as:

$$SQ_R = SDR * \min (STR, RFR), \quad (2)$$

where SDR is the soil depth rating, STR is the soil texture rating, and RFR is the rock fragment rating. Soil workability or ease of tillage is affected by both physical hindrances to cultivation (e.g., bedrock, rock fragments) and limitations imposed by soil texture. Soil workability was calculated as:

$$SQ_W = \frac{X_{jo} + 0.5 \sum_{j \neq jo} X_j}{2}, \quad (3)$$

where X is the soil property rating (i.e., SDR , STR , RFR), jo denotes the soil property with the lowest rating such that: $SR_{jo} \leq SR_j, j=1:3$.

The three soil quality indices were combined to calculate the soil suitability rating (SR):

$$SR = SQ_N * SQ_R * SQ_W, \quad (4)$$

285

3. Results

3.1 Soil Property Distributions

While the spatial distribution of surface soil texture classes differed among the four soil maps, they all displayed a general trend of coarser soil textures in the north and finer soil texture in the south (Fig. 3). Furthermore, all four maps showed similarities in the relative distribution of certain soil texture classes, with sandy loam, loam, sandy clay loam, and clay loam dominant within most maps (Fig. 4a-d). The WISE soil map predicted the highest diversity of soil texture classes (i.e., classes $\geq 1\%$ map area) with six texture classes, followed by HWSD and SoilGrids with five texture classes, and iSDA with four texture classes (Fig. 4). LandPKS field-based measurements spanned the widest range of textures, with a total of 11 classes (Fig. 4e). This is not surprising given the natural variability of soil texture at fine spatial scales. For WISE, HWSD, and SoilGrids, both the diversity of soil property classes and their relative distributions across the 6,514 study sites (Fig. 4f-h), which comprised a total of 19,542 soil layers, were similar to the soil property maps (Fig. 4a-c). In contrast, ISDA soil property distributions were markedly different at the study sites (Fig. 4i), exhibiting a higher diversity of property classes relative to their depth-wise areal distributions across Ghana (Fig. 4d), likely a result of the influence of the FTF sites on iSDA model predictions. This contrasted with the M2F dataset (independent of iSDA model predictions) where the distribution of iSDA texture predictions was more closely aligned with the depth-wise areal distributions across Ghana. It should be noted that the soil depth intervals for the depth-wise areal distributions differ from the depth intervals used for the study site distributions, where each unique set of depths for each map were converted to LandPKS standard depth intervals.

300



305 This resulted in maps with deep surface depth intervals (i.e., HWSD: 0-30 cm, WISE and iSDA: 0-20cm) being assigned these surface property values for the first two LandPKS soil intervals (i.e., 0-10, 10-20 cm), effectively adding greater weight to the surface texture in most maps relative to the unweighted distributions based on the original map depth intervals presented in Figures 4 and 5.

LandPKS sites are predominantly coarse textured soils with 71% of soil layers classified as sandy loam or coarser. In contrast, SoilGrids predicted only had 8% and HWSD 21% of soil layers as sandy loam or coarser. WISE was more similar with 51% of soil layers, and the predictions from iSDA the most similar with 77% of soil layers classified as sandy loam or coarser. Figure 5 shows the distribution of soil rock fragment classes for the LandPKS sites and corresponding soil map values. LandPKS sites showed a range of soil rock fragment classes in the FTF-M2F dataset, with an almost equal distribution among the first four classes. WISE and SoilGrids had high percentages in several of the higher rock fragment classes, which more closely aligned with LandPKS values, while HWSD predicted low rock fragments across the majority of sites (97% in the 1-15% class). For the M2F sites, LandPKS values were spread across multiple rock fragment classes (Fig. 315 5j), in contrast to HWSD, WISE and ISDA which predicted almost all sites in the 1-15% class (Fig. 5).

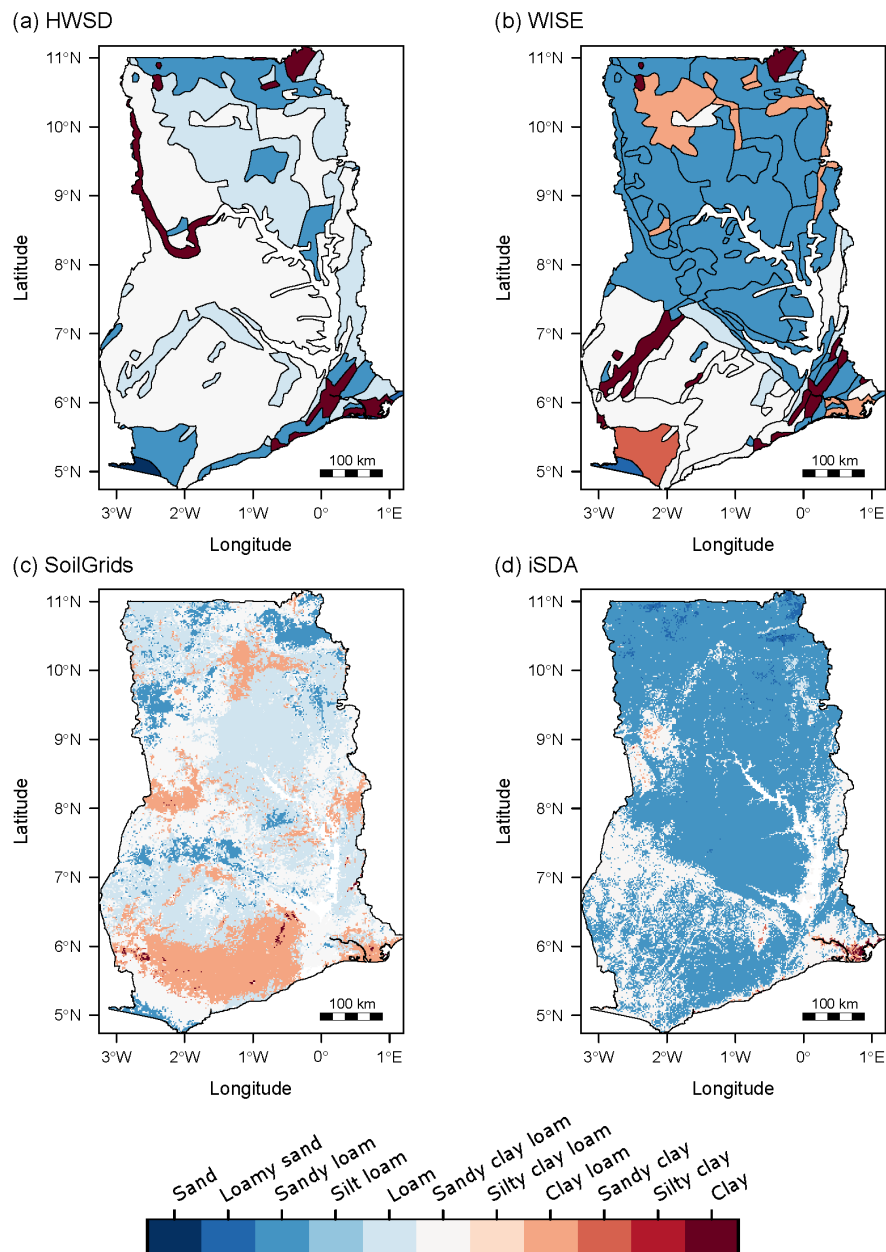
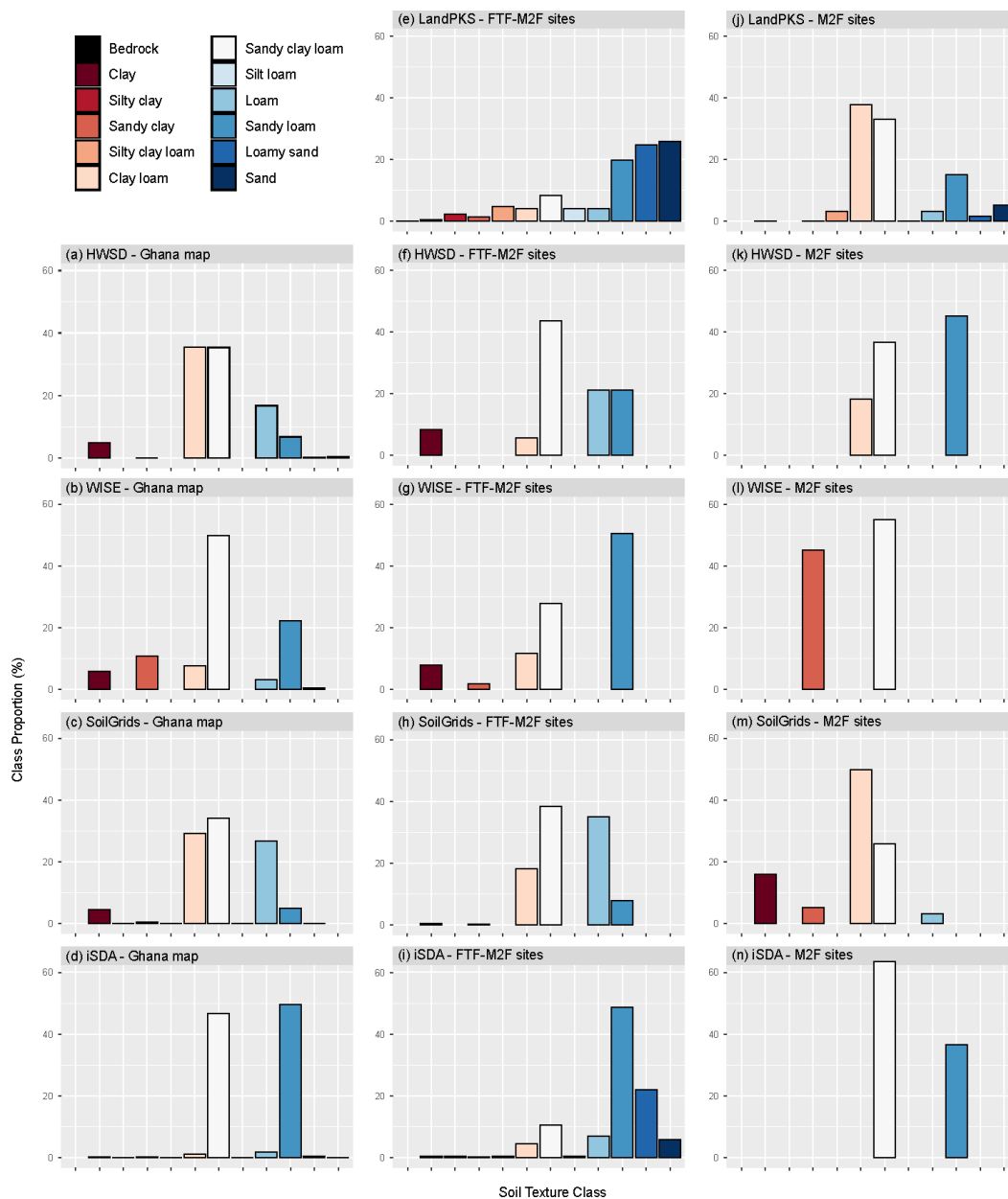


Figure 3. Soil map comparison of surface soil texture classes. Surface depth intervals differ between the four soil maps (HWSD: 0-30 cm; WISE: 0-20 cm; SoilGrids:0-5 cm; iSDA: 0-20 cm). Texture classes are ordered by mean particle size diameter.



320 **Figure 4.** Distribution of soil texture classes based on (a-d) areal map coverage across Ghana at original map depths, (e-i) distribution across the FTF-M2F dataset at LandPKS depths, and (j-n) distribution across the M2F dataset at LandPKS

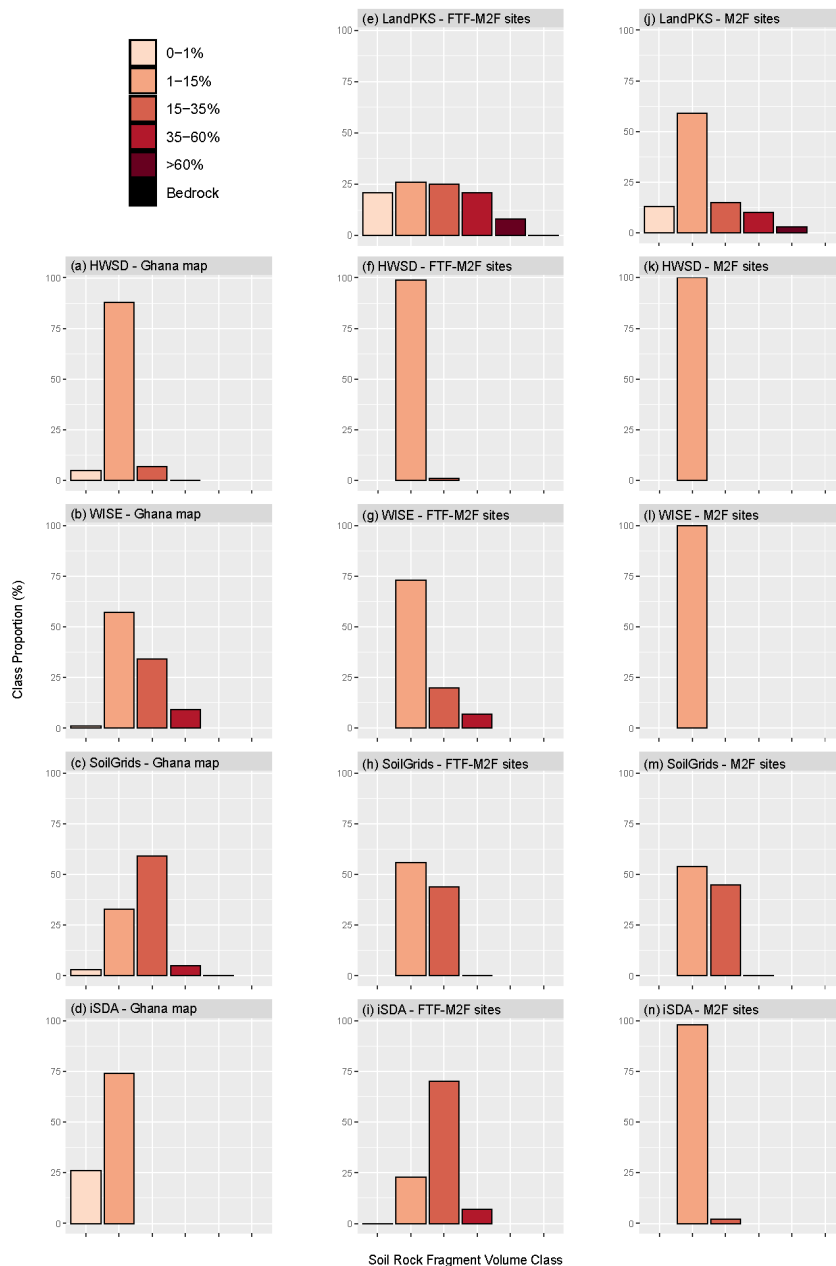


Figure 5. Distribution of soil rock fragment volume classes based on (a-d) areal map coverage across Ghana at original map depths, (e-i) distribution across the FTF-M2F dataset at LandPKS depths, and (j-n) distribution across the M2F dataset at LandPKS depths. Class proportions account for all soil map depths or LandPKS depths ≥ 50 cm, with equal weight assigned to each depth interval regardless of its total depth.

325



3.2 Evaluation of Soil Map Accuracy

3.2.1 Soil Property Class Match

330 Overall accuracy of soil property maps was low, ranging from 9% to 35% for soil texture class and 26% to 59% for soil rock
fragment class across the three test datasets (Table 2). Overall accuracies were slightly higher in southern Ghana (M2F
dataset) for both texture and rock fragments, although these higher accuracies are due to the overprediction of the dominant
classes. For example, in the M2F dataset, WISE, SoilGrids and iSDA soil maps predicted 99-100% of the sites in the 1-15%
rock fragment class which was the most dominant measured class (i.e., 59% of sites; Fig. 5j). This resulted in higher model
335 accuracy but low sensitivity for all other classes (Figs. 6,7). The balanced error rate was high across all maps, ranging from
75% to 95% for soil texture class and 79% to 83% for soil rock fragment class.

For the M2F dataset there was little-to-no difference between the soil map accuracies calculated at point-support (M2F-PS)
relative to accuracies calculated at field-support (M2F-FS) (Table 2). The average farm size across the 75 farms was 2.4 ha
(SD \pm 2.0) and our delineation procedure captured, on average, 48% of a field's area, with a range of 8% to 100%. On
340 average these delineated areas intersected 1.8 SoilGrids pixels (range: 1-4 pixels) and 8.6 iSDA pixels (range: 2-24). Due to
the large size of HWSD and WISE map unit polygons in Ghana, all farms fell within a single map unit and thus were
attributed with the dominant component property value for both the point-support and field-support cases.

When we expanded our measure of prediction accuracy to include adjacent classes (i.e., OA-adj), classification accuracy
increased to 39-85% for soil texture and 73-93% for rock fragment volume (Table 2). Individual soil texture class and rock
345 fragment class producer accuracies for the FTF-M2F-PS and M2F-PS datasets are show in Figures 6 and 7, respectively.
Although 51% of LandPKS site-based texture measurements were either sand or loamy sand, none of the web-based soil
maps predicted these classes at any of the sampling sites and at only <1% across all of Ghana (Fig. 4). Soil texture classes
with higher prediction accuracies included sandy clay loam, sandy loam, loam, and clay loam, which corresponded to the
most common texture classes predicted among the four maps (Figs. 4,6,7). A similar trend occurred for rock fragment
350 volume class (Figs. 4,6,7).



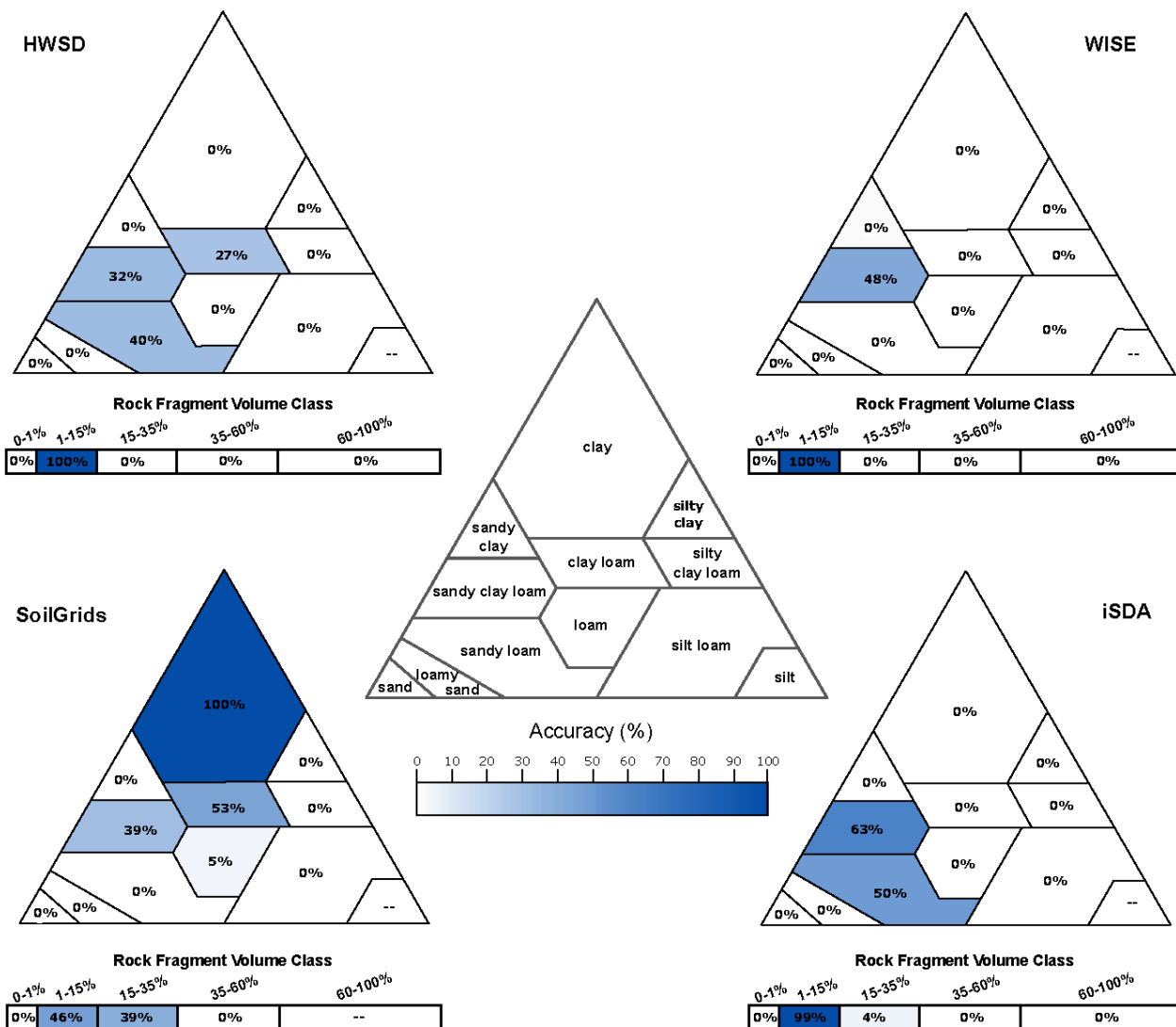
Table 2. Accuracy of soil map predictions for texture class and rock fragment volume class from the three evaluation datasets

| Soil Texture Class | | | | |
|-----------------------------------|-------------|-------------|------------------|--------------|
| | HWSD | WISE | SoilGrids | iSDA |
| FTF-M2F-PS | | | | |
| OA | 0.09 | 0.14 | 0.08 | <i>0.39†</i> |
| OA-adj | 0.40 | 0.49 | 0.39 | <i>0.85†</i> |
| BER | 0.91 | 0.91 | 0.90 | <i>0.76†</i> |
| M2F-PS | | | | |
| OA | 0.27 | 0.16 | 0.33 | 0.28 |
| OA-adj | 0.74 | 0.82 | 0.81 | 0.81 |
| BER | 0.90 | 0.95 | 0.80 | 0.88 |
| M2F-FS | | | | |
| OA | 0.28 | 0.15 | 0.35 | 0.32 |
| OA-adj | 0.80 | 0.85 | 0.84 | 0.90 |
| BER | 0.87 | 0.94 | 0.75 | 0.84 |
| Rock Fragment Volume Class | | | | |
| | HWSD | WISE | SoilGrids | iSDA |
| FTF-M2F -PS | | | | |
| OA | 0.27 | 0.29 | 0.26 | <i>0.33†</i> |
| OA-adj | 0.72 | 0.73 | 0.73 | <i>0.91†</i> |
| BER | 0.83 | 0.81 | 0.83 | <i>0.78†</i> |
| M2F-PS | | | | |
| OA | 0.59 | 0.59 | 0.33 | 0.59 |
| OA-adj | 0.87 | 0.87 | 0.88 | 0.87 |
| BER | 0.80 | 0.80 | 0.83 | 0.79 |
| M2F-FS | | | | |
| OA | 0.56 | 0.56 | 0.37 | 0.56 |
| OA-adj | 0.89 | 0.89 | 0.93 | 0.89 |
| BER | 0.80 | 0.80 | 0.82 | 0.80 |

†iSDA accuracy statistics for the ‘FTF-M2F-PS’ dataset are not reliable due to the partial use of this dataset (i.e., LandPKS Feed the Future sites) in iSDA model training/validation.

355 OA, overall accuracy; OA-adj, overall accuracy when accounting for class adjacency to the correct property class; BER, balanced error rate; FTF-M2F-PS, dataset containing all LandPKS sites in Ghana at point-support (6,514 sites, 19,542 soil layers); M2F-PS, LandPKS Map to the Future dataset at point-support (225 sites; 675 soil layers); M2F-FS, LandPKS Map to the Future dataset at field-support (75 sites; 225 soil layers).

360



365 Figure 7. Soil texture class and soil rock fragment volume class Producer's accuracy for the four soil maps based on the M2F dataset.



3.2.2 Agro-Ecological Zone Soil Suitability

The distribution of maize soil suitability ratings and classes calculated using LandPKS site-base data and soil map data is shown in Figure 8. Soil suitability ratings were noticeably different between LandPKS and the soil map, with LandPKS values being substantially lower than those of the soil maps. Furthermore, the range of suitability ratings for LandPKS was significantly wider than that of the soil maps for both datasets (Fig. 8a,b). While iSDA appears to capture these lower suitability ratings (Fig. 8a), when we look at the independent test dataset (M2F) we see that iSDA fails to detect these lower suitability soils (Fig. 8b). When suitability ratings are translated to suitability classes, these differences are further emphasized, with sampling sites classified in the top two suitability classes for the soil maps, whereas sampling sites for LandPKS were more evenly distributed across the suitability classes (Fig. 8c,d). While both the predictive and conventional soil maps were classified in either the ‘No constraint’ or ‘Slight constraint’ classes, 65% of sampling sites (17% of M2F sites) were classified as having moderate to very severe soil constraints based on LandPKS site-specific data (Fig. 8c,d). OA for the GAEZ suitability classes were similar for all four soil maps, at just 15-18% for the complete dataset and 27-61% for the M2F datasets (Table 3). High PA for the ‘No constraint’ suitability class and low-to-zero percent accuracies for the other suitability classes further show the over-prediction of the ‘No constraint’ suitability class among the four maps (Table 3). A PA of zero for a suitability class means that the maps did not correctly predict any of the field observations of that class. UAs that fail to return a value indicate that the map failed to predict any values of that class (Table 3).

Analysis of the individual soil quality indices revealed that most sites were limited by their availability of soil nutrients, with 50% of LandPKS sites having a moderate to very severe constraint (Fig. 9a). Far fewer sites were constrained by rooting conditions or workability, with only 15% and 2% of LandPKS sites having a moderate to very severe constraint for rooting conditions (Fig. 9b) and workability (Fig. 9c), respectively. Nutrient availability was a main source of limitations identified for HWSO but not for either WISE or SoilGrids. HWSO and WISE also had limitations identified for soil rooting conditions in a small subset of sites. No limitations were identified for workability by any of the soil maps (Fig. 9c).

390



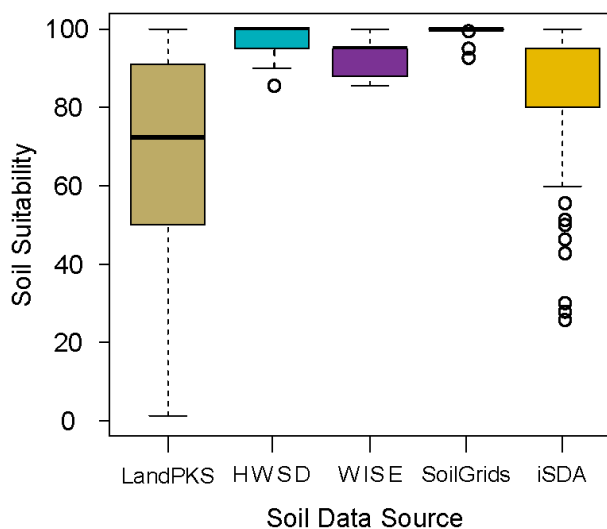
Table 3. Accuracy of soil map predictions for AEZ soil suitability classes

| Suitability classes | HWSD | | WISE | | SoilGrids | | iSDA | |
|------------------------|-------------|------|-------------|------|-------------|------|-------------|-------|
| | PA | UA | PA | UA | PA | UA | PA | UA |
| FTF-M2F -PS | | | | | | | | |
| No constraint | 0.69 | 0.14 | 0.83 | 0.18 | 0.94 | 0.15 | 0.84† | 0.43† |
| Slight constraint | 0.21 | 0.17 | 0.26 | 0.18 | 0.02 | 0.28 | 0.40† | 0.27† |
| Moderate constraint | 0.00 | -- | 0.00 | -- | 0.00 | 0.00 | 0.43† | 0.45† |
| Severe constraint | 0.00 | -- | 0.00 | -- | 0.00 | -- | 0.16† | 0.34† |
| Very severe constraint | 0.00 | -- | 0.00 | -- | 0.00 | -- | 0.09† | 0.92† |
| Not suitable | 0.00 | -- | 0.00 | -- | 0.00 | -- | 0.00† | -- |
| OA | 0.15 | -- | 0.18 | -- | 0.15 | -- | 0.39† | -- |
| M2F-PS | | | | | | | | |
| No constraint | 0.39 | 0.40 | 1.00 | 0.56 | 0.52 | 0.58 | 1.00 | 0.56 |
| Slight constraint | 0.19 | 0.11 | 0.00 | -- | 0.52 | 0.28 | 0.00 | -- |
| Moderate constraint | 0.00 | -- | 0.00 | -- | 0.00 | -- | 0.00 | -- |
| Severe constraint | 0.00 | -- | 0.00 | -- | 0.00 | -- | 0.00 | -- |
| Very severe constraint | 0.00 | -- | 0.00 | -- | 0.00 | -- | 0.00 | -- |
| Not suitable | -- | -- | -- | -- | -- | -- | -- | -- |
| OA | 0.27 | -- | 0.56 | -- | 0.43 | -- | 0.56 | -- |
| M2F-FS | | | | | | | | |
| No constraint | 0.39 | 0.44 | 1.00 | 0.61 | 0.50 | 0.61 | 1.00 | 0.61 |
| Slight constraint | 0.21 | 0.12 | 0.00 | -- | 0.53 | 0.27 | 0.00 | -- |
| Moderate constraint | 0.00 | -- | 0.00 | -- | 0.00 | -- | 0.00 | -- |
| Severe constraint | 0.00 | -- | 0.00 | -- | 0.00 | -- | 0.00 | -- |
| Very severe constraint | -- | -- | -- | -- | -- | -- | -- | -- |
| Not suitable | -- | -- | -- | -- | -- | -- | -- | -- |
| OA | 0.29 | -- | 0.61 | -- | 0.44 | -- | 0.61 | -- |

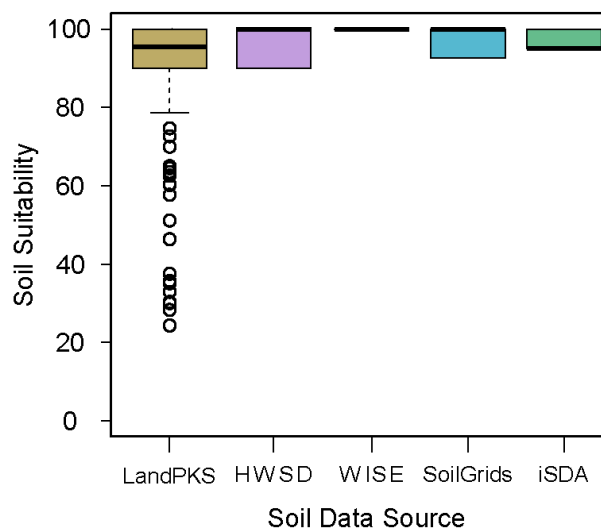
†iSDA accuracy statistics for the ‘FTF-M2F-PS’ dataset are not reliable due to the partial use (LandPKS Feed the Future dataset) of this dataset in iSDA model training/validation.



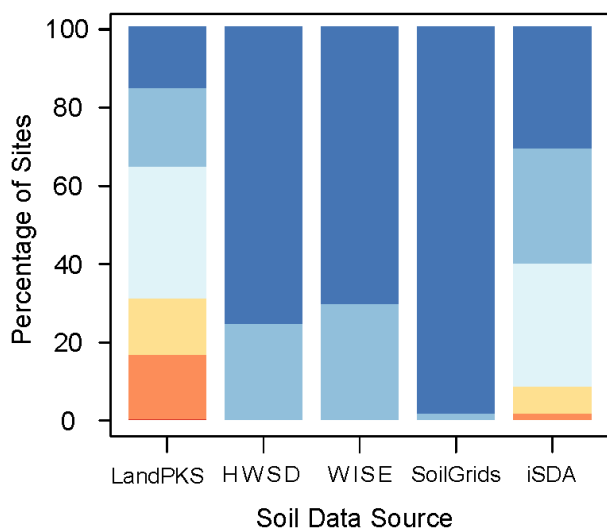
(a) Maize soil suitability ratings - All-sites



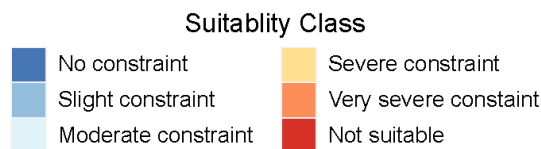
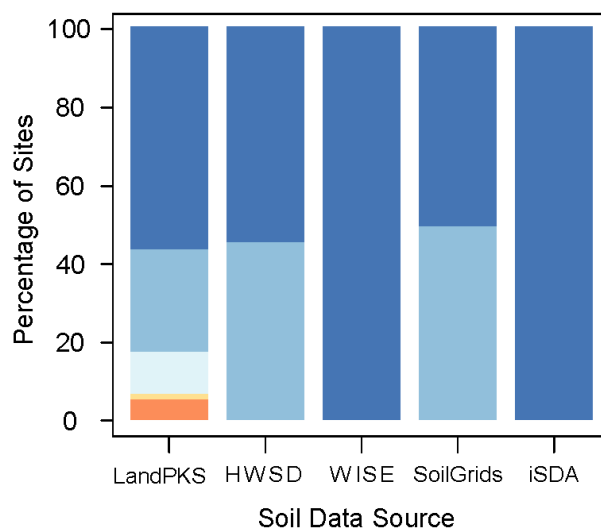
(b) Maize soil suitability ratings - M2F-sites



(c) Maize soil suitability classes - All-sites



(d) Maize soil suitability classes - M2F-sites

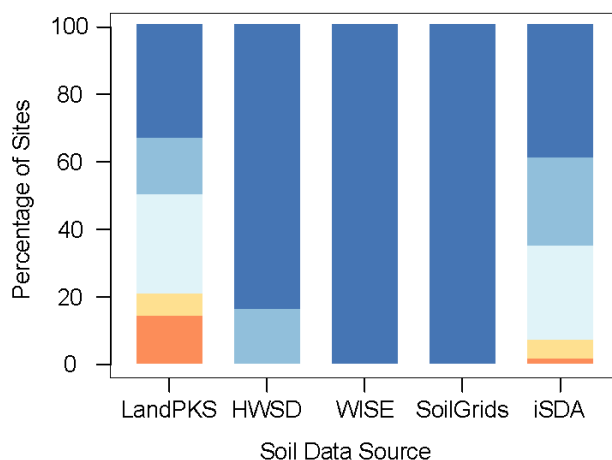


395

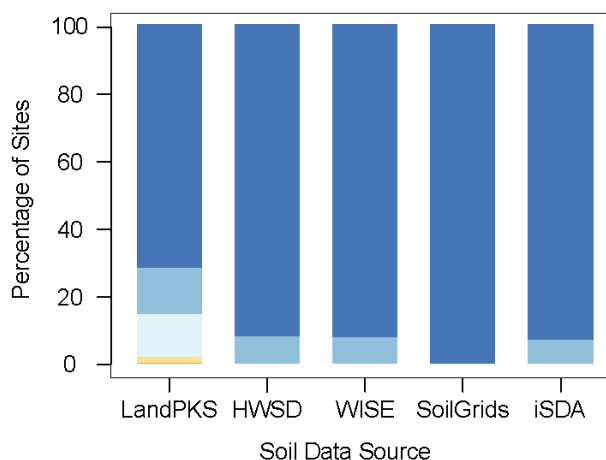
Figure 8. Distribution of GAEZ soil suitability ratings (a,b) and classes (c,d) for the FTF-M2F and M2F soil sampling sites based on the five different soil data sources.



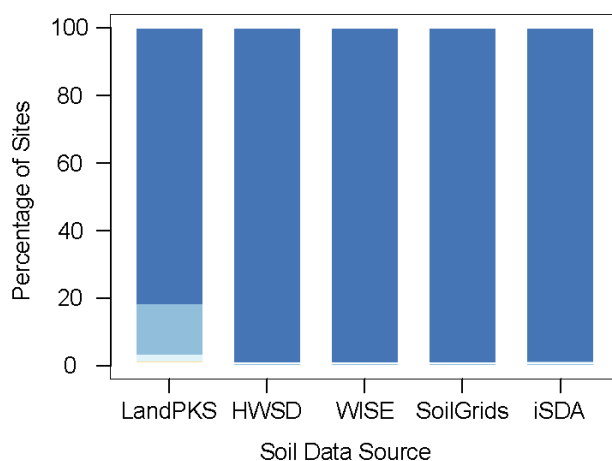
(a) Soil Nutrient Availability



(b) Soil Rooting Conditions



(c) Soil Workability



Suitability Class



400 **Figure 9. Distribution of GAEZ soil quality index classes for (a) soil nutrient availability (b) soil rooting conditions, and (c) soil workability for the FTF-M2 dataset (6,514 soil sampling sites) based on the five different soil data sources.**



4. Discussion

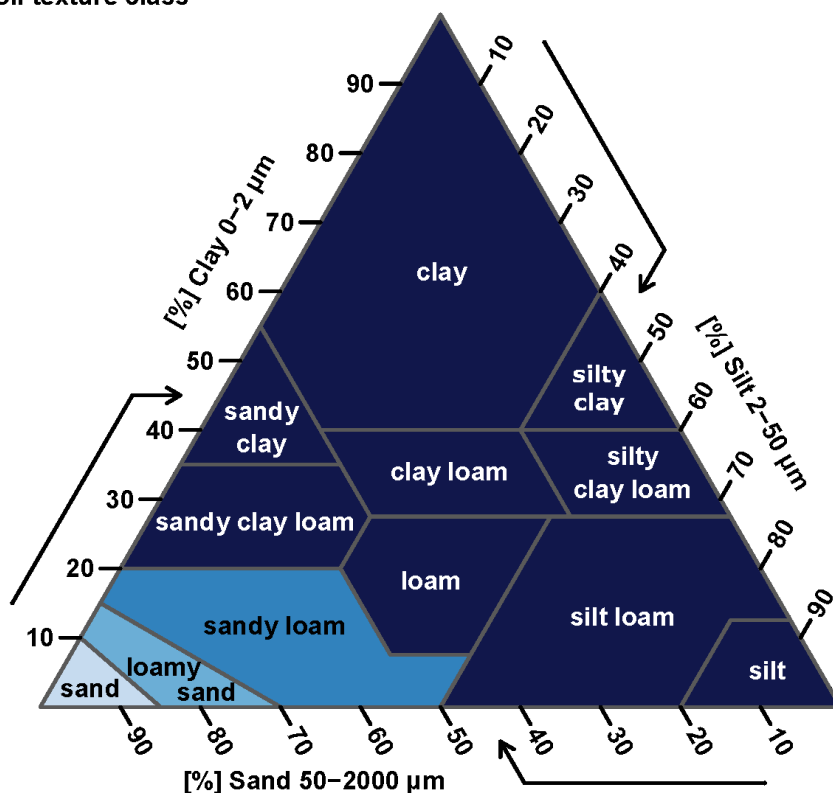
4.1 Evaluation of soil map accuracy

405 The utility of a soil map depends on its intended use and the level of accuracy required for that use. When applied at a regional scale, current soil maps have been used effectively to inform agronomic and environmental policies. However, less is known about the accuracy of soil maps at the farm/field scale and whether soil map data at this scale is sufficiently accurate to inform site-specific land management. Differences in soil properties between sites, like pH or texture, can result in highly different management requirements. For example, many essential plant nutrients become increasingly unavailable in soils at low pH (e.g., <math><4.5</math>), making any efforts to fertilize acidic soils ineffective. Acidic soils require the application of amendments (e.g., lime) to raise the soil pH before any inherent nutrient deficiencies can be addressed. Accurately identifying these site-specific soil differences is critical for addressing the soil limitations that currently inhibit crop yields. Results from this study revealed that publicly available web-based soil maps of Ghana lack the needed accuracy to reliably inform soil management decisions on smallholder farms (i.e., 1-2 ha). Standard measures of map accuracy for the class-based soil properties (i.e., texture class, rock fragment class) showed that all the soil maps were equally inaccurate in estimating the correct property class, predicting the wrong texture class 6-9 times out of 10 and the wrong rock fragment class 4-7 times out of 10. A similar study in Namibia evaluated the accuracy of surface soil texture estimates from seven soil maps (including HWSD, WISE and SoilGrids) (Buenemann et al., 2021). This study found that soil maps in Namibia predicted the correct topsoil texture class in only 13% to 42% of test sites, indicating that none of the maps were sufficiently accurate for most site-specific management applications. Another study in Rwanda evaluated the accuracy of SOC and pH predictions from AfsoilGrids250 maps (Söderström et al., 2017). Söderström et al. (2017) found that the AfsoilGrids250 soil map predictions in Rwanda were poorly correlated to an independent validation dataset, with coefficients of determination of 0.05 and 0.11 for SOC and pH, respectively.

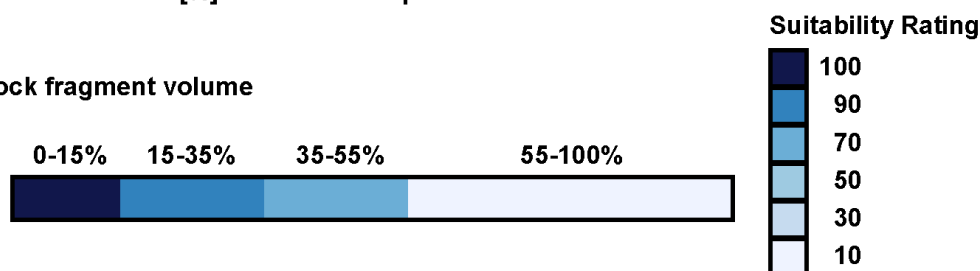
425 Accuracy assessments based on exact matching of soil classes, however, can underrepresent the functional accuracy of soil properties. For example, two soils with the same clay content (15%) but slightly different sand contents (51 vs 53% sand) would fall into two different soil texture classes (sandy loam and loam, respectively) due to their proximity to the texture class boundary (Fig. 10a). If we predicted both soils to be sandy loam, our accuracy would only be 50% even though both soils may function like a sandy loam. Accounting for class adjacency in the overall accuracy evaluation accounts for these 'near misses', providing a less restrictive assessment of map accuracy. However, although class-adjacent accuracies in this study were higher than overall accuracies for both texture and rock fragment volume across all soil maps, they only increased to 36-43% for texture and 43-49% for rock fragment volume (Table 2). This indicates that 50-60% of map-based soil property estimates were considerably different (i.e., greater than one property class difference) than site-based estimates. A similar result was found in Namibia, where topsoil texture predictions were often more than one textural class away from the site-based classes (Buenemann et al., 2021).



(a) Soil texture class



(b) Rock fragment volume



435

Figure 10. GAEZ soil nutrient availability ratings for the different soil texture and rock fragment volume classes based on a rain-fed, low-input maize production system.

While comparing relative differences in soil property values can provide insight into the accuracy of map-based estimates, it is often difficult to interpret the functional implications of those differences. Modelling frameworks like GAEZ provide a way to translate soil property differences into crop-specific soil quality indices and soil suitability ratings that can compare soil functional differences. Additionally, the GAEZ framework provides a more holistic means of comparing soils since each soil suitability rating is calculated based on all soil properties and across all soil depths at a site, providing a single functional

440



measure at each location. This contrasts with standard measures of map accuracy that are based on a single soil property at
445 only one soil depth.

In our application of the GAEZ framework (low-input, rain-fed maize) the soil property rating criteria were based on two
different levels of soil property generalization. The first based on the groupings of soil property values into soil property
classes (Figs. 6,7) and second, the broad grouping of soil classes into soil suitability ratings (e.g., Fig. 10). This means that in
many cases soil property differences resulting from either measurement or prediction error will be minimized due to these
450 large within-group property ranges. This is not the case, however, within certain regions of the soil property space. For
example, in the GAEZ system, soil texture poses no limitations to nutrient availability for all texture classes except the three
classes with the highest sand content (sandy loam, loamy sand, sand) which pose increasing limitations with increasing sand
content (Fig. 10). Thus, to accurately assess this limitation one must accurately differentiate a sand, loamy sand, or sandy
loam from any texture finer than a sandy loam. On the other end of the soil textural triangle, the clay texture class negatively
455 impacts the soil quality ratings for rooting condition and workability, while all other texture classes do not pose any
limitations. Despite these relatively narrow soil property ranges for identifying crop constraints, 65% of sites were classified
as having moderate to very severe soil constraints, while the soil maps all failed to predict these high constraint classes at
any of the study sites. The low functional accuracy of soil maps in Ghana based on our modified GAEZ framework was due
to several contributing factors: (1) constraints on maize soil suitability were largely confined to coarse textured soils (i.e.,
460 sand, loamy sand, sandy loam), (2) 71% of site-based texture estimates were in coarse texture classes, and (3) soil maps had
low prediction accuracy for the coarse texture classes. In areas dominated by medium-to-fine textured soils, functional
accuracies would likely be much higher due to the wide range of texture classes (e.g., sandy clay loam vs silty clay) that are
rated functionally similar (Fig. 10a).

4.2 Estimating site-based soil properties: Potential sources of error

465 4.2.1 Sources of field sampling error

When evaluating the accuracy of soil map predictions, two sources of error can occur from the field sampling protocol: the
first originating from the sampling design and second from the sampling methodology. Several recent studies have shown
that unbiased assessments of soil map accuracy require independent test datasets that have been generated using probability-
based sampling designs (Brus et al., 2011; Piikki et al., 2021). The datasets used in this study were purposive, focusing on
470 smallholder farmers in Ghana, and spatially clustered in northern Ghana, with only a small subset of farms in southern
Ghana. However, within this specific land use type, probability-based sampling methods were used to select sites from a
larger population of smallholder farms. Therefore this assessment should only be viewed in the context of utilizing soil maps
to help inform smallholder farmers, and not their utility for informing other land use types (e.g., forestry, grazing lands)
which may provide more accurate soil predictions.



475 Field sampling error can also occur due to differences in sampling methodology. This study used field-estimated soil
property values as reference data for evaluating the accuracy of soil map predictions. Field estimation of soil texture using
simple dichotomous keys has been shown to produce relatively accurate estimates when compared to laboratory
measurements (Salley et al., 2018; Vos et al., 2016). Furthermore, numerous studies evaluating the accuracy of field-based
soil texture estimates have found that very coarse (e.g., sand) and very fine (e.g., clay) soil texture classes are estimated with
480 higher accuracies relative to medium texture classes. For example, field-based texture class prediction accuracies averaged
80% ($\pm 7\%$ std.) for sand and 56% ($\pm 15\%$ std.) for clay among 8 different studies (Akamigbo, 1984; Foss et al., 1975; Levine
et al., 1989; Minasny et al., 2007; Post et al., 1986; Rawls and Pachepsky, 2002; Salley et al., 2018), compared to 34%
($\pm 11\%$ std.) for loam among the same studies. Field-based estimates of soil texture in this study were made using the Thien
(1979) flow diagram which begins with a ball test to determine if a soil classifies as a sand. The higher accuracies for sand
485 reported in previous studies are likely due to the simplicity of this initial test and its low likelihood of resulting in errors of
omission or commission. For our evaluation of functional accuracy using the modified GAEZ framework, functional
differences for soil texture only occurs in soils with either highly sandy (SQ_N , Fig. 10) or highly clay (SQ_W) textured soils.
The higher accuracy of hand texture estimates in these regions of the soil texture space decreases the potential of sampling
error in our functional accuracy evaluation.

490

4.2.2 Sources of map error: spatial uncertainty

Soil maps are created at defined spatial scales, producing map information (e.g., field data, assigned classes, spatial
delineations, interpretations) that is constrained by the patterns and characteristics of those scales (Soil Survey Division
Staff, 2017). Both conventional and predictive soil maps account for spatial uncertainty in different ways. For conventional
495 soil maps, the mapping scale determines the size and purity of soil map units, where small map scales (e.g., 1:5,000,000)
contain large map units comprised of multiple soil components, while large map scales (e.g., 1:12,000) contain smaller map
units that are often comprised of a single soil component. The small map scale of HWSD and WISE (1:5,000,000) resulted
in individual map unit polygons ranging in area from 61 km² to 17,947 km². Across these vast areas each map unit is only
attributed with a few soil components whose spatial delineation within each polygon is unspecified. The most common
500 approach to deal with this spatial uncertainty is to attribute each polygon to its dominant soil component, as was done in this
study. Depending on the number of soil components in a map unit and their areal extents, it is possible for the dominant
component to comprise only a small percentage (e.g., 20%) of a large map unit area. Given the large spatial extent of the
map unit polygons in the study area and our generalization of map units based on dominant component, it is not surprising
that these map products resulted in low site-specific accuracies.

505 Predictive soil maps are faced with a different set of challenges relating to spatial uncertainty. Since predictive soil maps use
raster based environmental data as their predictive covariates, the spatial resolution of covariate data determines the spatial
scale of the resulting soil map, which imparts an implied level of precision to the end-user. The accuracy of predictive soil
maps, however, depends on the characteristics of both the soil point data and covariate data used to build the models. An



important characteristic of the soil data is how well it represents the variability of covariate data across the entire inference
510 space. Predictive soil maps often use existing field data from soil surveys that were conducted at different spatial scales to
train and validate their models, and therefore may not adequately represent the full covariate information space. This can
result in cases where the global model accuracy is high but local model accuracies are low, because certain geographic
regions within the prediction area are poorly represented in the model covariate space. This was seen in the case of iSDA
where global prediction accuracies (Concordance Correlation Coefficient) for sand, silt, and clay ranged from 0.78-0.85
515 (Hengl et al., 2021), yet texture class prediction accuracies in Ghana were low (OA: 0.28-0.32). Similarly, SoilGrids global
prediction accuracies (model efficiency coefficient) for sand, silt, and clay ranged from 0.40-0.70 (Poggio et al., 2021), while
SoilGrids texture class prediction accuracies in Ghana were low (OA: 0.08-0.35). While these map products were not able to
provide sufficiently accurate soil property predictions for site-specific management within the study area, high global
prediction accuracies for many of the modelled soil properties indicates that these maps have higher accuracies across larger
520 spatial/variance scales. While both predictive soil maps provide measures of spatial uncertainty (SoilGrids: Quantile
Random Forest; iSDA: Ensemble Bootstrapping), these are uncertainty measures relating to model uncertainty, which is
constrained by the regions of covariate space quantified by the model (i.e., model inference space), and thus not able to
account for uncharacterized regions of covariate space.

The increasing availability of higher spatial resolution environmental covariates has led to expanded efforts to produce finer
525 spatial resolution soil predictions. However, the relationship between each soil property or class and the covariate data can
be scale-dependent, meaning that the scale at which a covariate is calculated can affect the strength of its relationship to the
modelled property. Thus, higher spatial resolution covariates do not always translate to more accurate fine-scale model
predictions, and in some cases model accuracy may decrease due to the scale-dependency of the predictor-covariate
relationships. Several studies have demonstrated these spatial scaling effects for terrain attributes, where the highest model
530 accuracies did not correspond to the terrain attributes calculated at the finest spatial scales (Kim and Zheng, 2011; Maynard
and Johnson, 2014; Roecker and Thompson, 2010).

Growing recognition of the need for site-specific soil data has prompted efforts to produce finer spatial resolution soil data
from existing soil maps. For example, disaggregation techniques are being used to delineate the location of soil map unit
components within conventional soil maps (Håring et al., 2012; Nauman and Thompson, 2014; Vincent et al., 2018) and
535 predictive soil maps are using higher spatial resolution covariates to make higher spatial resolution predictions (e.g., iSDA).
However, it is important to recognize that the primary data (e.g., map unit polygons, point data), metadata, and inherent
decisions made at the original soil mapping scale remain determinate, where those original biases persist across scales. These
initial biases can be compensated for through targeted sampling to expand and refine the model inference space (Soil Survey
Division Staff, 2017). For example, Stumpf et al. (2017) used model uncertainty to guide additional sampling efforts for
540 model refinement, while other studies have used additional sampling to refine regional-to-continental scale soil map
predictions within a localized area for farm-scale applications (Piikki et al., 2017; Söderström et al., 2017).



4.2.3. Sources of map error: temporal uncertainty

Current soil maps provide models of soil spatial variation that ignore temporal changes in soil properties. Conventional soil maps are created over years-to-decades and populated with soil data that represents the modal concept of soil types. Predictive soil maps use soil profile datasets collected over multiple decades which are correlated to environmental covariates that often represent either a single point in time or some aggregate value calculated from a fixed time interval. If significant soil degradation occurs sometime after the soil profile data was collected, the covariate data at that site may no longer correspond to the original soil property values. This can weaken or introduce confusion into the modelled relationship between soil property data and environmental covariates, which in turn can negatively impact the accuracy of model predictions (Owusu et al., 2020). Our evaluation of soil map accuracy in this study focused on static soil properties, which in theory should provide more accurate map estimates relative to measures of soil health (e.g., soil nutrients) that change in response to land use and management over short time scales (i.e., years-to-decades). However, in high erosional or depositional environments these static properties can also change over relatively short time scales, which may have contributed to the low map accuracy for these static soil properties in this study. Furthermore, these results suggests that efforts to map more dynamic properties using either conventional or predictive mapping approaches would likely produce estimates with even greater uncertainty.

4.3. Implications for site-specific soil management

To close existing yield gaps smallholder farmers must identify the factors that constrain productivity. Many yield limiting factors are directly or indirectly soil-related, including nutrient deficiencies, susceptibility to drought, soil compaction, waterlogging, high erosion risk, etc. Obtaining accurate site-specific soil data is a first step towards uncovering soil-based limitations and implementing management practices that can mitigate these production constraints. Current web-based soil maps of Ghana fail to meet the accuracy requirements for site-specific farm management or even for farm-level land use planning. Field-based texture assessments like the ones used in this study, coupled with ongoing advancements in soil mapping and on-site verification technologies like proximal sensors (Piikki et al., 2016; Viscarra Rossel et al., 2011) and smartphone-based decision support tools (Herrick et al., 2013; O'Geen et al., 2017), can help constrain the uncertainty associated with site-based soil map predictions.

There is a need for improved technologies that can assist farmers in identifying their soil characteristics, and matching those characteristics to appropriate inputs and technologies that can enhance the long-term production capacity of their soils (Berkhout et al., 2015). A useful conceptual model employed by conventional soil maps is the grouping of soils into soil types based on both field-described morphology data and laboratory analysis. Soil types convey information on the general range of soil behavior a land manager can expect in response to management actions and disturbance effects. Through identifying the soil type at a location, smallholder farmers can gain a better understanding of potential soil limitations and the most appropriate management strategies for improving soil health and crop yields. The concept for each soil type is based on



575 a set of reference soils which define the representative soil property distributions for each soil type. Soil types that have been intensively managed over long periods of time, however, can deviate significantly from these representative property ranges. Thus, in addition to understanding the soil type, information on a site's management history and current resource allocation are needed to better assess general soil health and possible soil-related limitations.

To make soil information actionable for smallholder farmers, soil information needs to be contextualized for their intended land use. For example, a maize farmer needs to know how their soil texture, rock fragment content, and soil depth will affect 580 crop growth. Based on their soil type and management history, farmers also need to know what type of fertilizer to apply, in what amount, and when to apply it for optimal crop uptake. This study demonstrated how downscaling the GAEZ soil suitability framework provides a way to interpret site-specific soil information for crop-specific soil management. While this study applied a modified version of GAEZ based on static soil properties, this approach could also incorporate dynamic soil properties that influence soil nutrient availability as well as other soil quality indices.

585 **5. Conclusions**

Many agronomic constraints are directly or indirectly soil-related, and therefore accurate site-specific soil information is needed to address these limitations. Technological advancements are facilitating the creation of soil maps at high spatial resolutions which impart an implied level of precision. The accuracy, and thus utility, of these maps for applications at large spatial scales is often unknown. This study evaluated both the relative and functional accuracy of four publicly available 590 web-based soil maps of Ghana and found that in most cases these map products are not accurate enough to inform site-specific soil management. We found that overall accuracies for soil texture and rock fragments predictions ranged from 8-39% and 26-33%, respectively. Traditional measures of map accuracy, however, can be misleading since small differences in soil property values, while technically different, may be functionally similar. To account for this, we used a modified version of the GAEZ soil suitability framework to evaluate the functional accuracy of the soil map predictions. This 595 functional assessment confirmed the results from the standard accuracy assessment, with overall accuracies for soil suitability classes ranging from 15-61%. Results from this study highlight the need for on-site verification technologies like smartphone-based decision support tools and proximal sensors that, when coupled with soil maps, can help constrain the uncertainty associated with site-based soil map predictions. Such advancements would provide access to accurate soil property information which is urgently needed by smallholder farmers to improve soil health and enhance the long-term 600 production capacity of their soils.

Code and Data availability.

All data used in this study are available from public data repositories. All R code required to reproduce the content of this study will be made publicly available on Github.



Author contributions.

605 JM, JH, and JN conceived and designed the study. JH and JN secured funding. EY and SO performed field work. JM performed the analysis, visualization, and drafted the manuscript. All authors (JM, EY, SO, MB, JN, JH) contributed to the review, interpretation, and writing of the final manuscript.

Competing interests.

The authors declare that they have no conflict of interest.

610 **Acknowledgements.**

We gratefully acknowledge the valuable inputs and cooperation from the Grameen Foundation.

References

- Adjei-Gyapong, T. and Asiamah, R. D.: The interim Ghana soil classification system and its relation with the World Reference Base for Soil Resources, Quatorzième réunion du Sous-Comité ouest Cent. africain corrélation des sols, 98, 9–13, 615 2002.
- Akamigbo, F. O. R.: The accuracy of field textures in a humid tropical environment., *Soil Surv. L. Eval.*, 4(3), 63–70, 1984.
- Awadzi, T. W. and Asiamah, R. D.: Soil Survey in Ghana, *Soil Horizons*, 43(2), 44, doi:10.2136/sh2002.2.0044, 2002.
- Batjes, N. H.: Harmonized soil property values for broad-scale modelling (WISE30sec) with estimates of global soil carbon stocks, *Geoderma*, 269, 61–68, doi:10.1016/j.geoderma.2016.01.034, 2016.
- 620 Berkhout, E. D., Franke, A. C. and Abdoulaye, T.: Smallholder Management of Diverse Soil Nutrient Resources in West Africa Economics and Policy Implications Ezra, in *Soil-specific farming: precision agriculture*, vol. 22, edited by R. Lal and B. A. Stewart, CRC Press., 2015.
- Bishop, T. F. A., Horta, A. and Karunaratne, S. B.: Validation of digital soil maps at different spatial supports, *Geoderma*, 241–242, 238–249, doi:10.1016/j.geoderma.2014.11.026, 2015.
- 625 Bouma, J. and Finke, P. A.: Origin and Nature of Soil Resource Variability, in *Soil Specific Crop Management*, pp. 1–13, ASA-CSSA-SSSA, Madison, WI., 1993.
- Brevik, E. C., Calzolari, C., Miller, B. a., Pereira, P., Kabala, C., Baumgarten, A. and Jordán, A.: Soil mapping, classification, and pedologic modeling: History and future directions, *Geoderma*, (November 2015),



- doi:10.1016/j.geoderma.2015.05.017, 2015.
- 630 Brus, D. J., Kempen, B. and Heuvelink, G. B. M.: Sampling for validation of digital soil maps, *Eur. J. Soil Sci.*, 62(3), 394–407, doi:10.1111/j.1365-2389.2011.01364.x, 2011.
- Chapoto, A. and Tetteh, F.: Examining the Sense and Science Behind Ghana’s Current Blanket Fertilizer Recommendation, *SSRN Electron. J.*, (July), doi:10.2139/ssrn.2483977, 2014.
- Fening, J. O.: Improving the Profitability, Sustainability and Efficiency Recommendations in West Site Specific Fertilizer of
635 Nutrients Through Africa Agro-Ecosystems., 2018.
- Fischer, G., Nachtergaele, F., Prieler, S., Velthuisen, H. T. van, Verelst, L. and Wiberg, D.: Global Agro-ecological Zones :Model documentation, *Food Agric. Organ. United Nations*, 179, 2008.
- Foss, J. E., Wright, W. R. and Coles, R. H.: Testing the accuracy of field textures, *Soil Sci. Soc. Am. J.*, 39(4), 800–802, 1975.
- 640 Geze Toth, Bartosz Kozłowski, Sylvia Prieler, D. W.: Global Agro-ecological Zones User ’ s Guide, , 74 [online] Available from: http://webarchive.iiasa.ac.at/Research/LUC/GAEZv3.0/docs/GAEZ_User_Guide.pdf, 2012.
- Häring, T., Dietz, E., Osenstetter, S., Koschitzki, T. and Schröder, B.: Spatial disaggregation of complex soil map units: A decision-tree based approach in Bavarian forest soils, *Geoderma*, 185–186, 37–47, doi:10.1016/j.geoderma.2012.04.001, 2012.
- 645 Hengl, T., Miller, M. A. E., Križan, J., Shepherd, K. D., Sila, A., Kilibarda, M., Antonijević, O., Glušica, L., Glušica, G., Dobermann, A., Haefele, S. M., McGrath, S. P., Acquah, G. E., Collinson, J., Parente, L., Sheykhmousa, M., Saito, K., Johnson, J.-M., Chamberlin, J., Silatsa, F. B. T., Yemefack, M., Macmillan, R. A., Wheeler, I. and Crouch, J.: African Soil Properties and Nutrients Mapped at 30-m Spatial Resolution using Two-scale Ensemble Machine Learning, [online] Available from: <https://www.researchsquare.com/article/rs-120359/v1>, 2020.
- 650 Hengl, T., Miller, M. A. E., Križan, J., Shepherd, K. D., Sila, A., Kilibarda, M., Antonijević, O., Glušica, L., Dobermann, A., Haefele, S. M., McGrath, S. P., Acquah, G. E., Collinson, J., Parente, L., Sheykhmousa, M., Saito, K., Johnson, J. M., Chamberlin, J., Silatsa, F. B. T., Yemefack, M., Wendt, J., MacMillan, R. A., Wheeler, I. and Crouch, J.: African soil properties and nutrients mapped at 30 m spatial resolution using two-scale ensemble machine learning, *Sci. Rep.*, 11(1), 1–18, doi:10.1038/s41598-021-85639-y, 2021.
- 655 Herrick, J. E., Urama, K. C., Karl, J. W., Boos, J., Johnson, M.-V. V., Shepherd, K. D., Hempel, J., Bestelmeyer, B. T., Davies, J., Guerra, J. L., Kosnik, C., Kimiti, D. W., Ekai, a. L., Muller, K., Norfleet, L., Ozor, N., Reinsch, T., Sarukhan, J. and West, L. T.: The global Land-Potential Knowledge System (LandPKS): Supporting evidence-based, site-specific land



- use and management through cloud computing, mobile applications, and crowdsourcing, *J. Soil Water Conserv.*, 68(1), 5A-12A, doi:10.2489/jswc.68.1.5A, 2013.
- 660 Heuvelink, G. B. M. and Webster, R.: Modelling soil variation: Past, present, and future, *Geoderma*, 100(3–4), 269–301, doi:10.1016/S0016-7061(01)00025-8, 2001.
- Kim, D. and Zheng, Y.: Scale-dependent predictability of DEM-based landform attributes for soil spatial variability in a coastal dune system, *Geoderma*, 164(3–4), 181–194, doi:10.1016/j.geoderma.2011.06.002, 2011.
- Levine, S. J., Post, D. F. and Ellsworth, T. J.: An evaluation of student proficiency in field estimation of soil texture, *J. Agron. Educ.*, 18(2), 100–104, 1989.
- 665 Maynard, J. J. and Johnson, M. G.: Scale-dependency of LiDAR derived terrain attributes in quantitative soil-landscape modeling: Effects of grid resolution vs. neighborhood extent, *Geoderma*, 230–231, 29–40, doi:10.1016/j.geoderma.2014.03.021, 2014.
- Minasny, B., McBratney, A. B., Field, D. J., Tranter, G., McKenzie, N. J. and Brough, D. M.: Relationships between field texture and particle-size distribution in Australia and their implications, *Soil Res.*, 45(6), 428–437, 2007.
- 670 Montanarella, L., Badraoui, M., Chude, V., Costa, I., Baptista, saurinda D. S., Mamo, T., Yemefack, M., Aulang, M. S., Yagi, K., Hong, S. Y., Vijarnsorn, P., Zhang, G. L., Arrouays, D., Black, H., Krasilnikov, P., Sobocá, J., Alegre, J., Henriquez, C. R., Mendonça-Santos, M. de L., Taboada, M., Victoria, D. E., Alshankiti, A., Panah, S. K. A., Sheikh, E. A. E. M. El, Hempel, J., Pennock, D., Camps, M., Pennock, Dan, Camps, A. M. and McKenzie, N.: Status of the World's Soil Resources. [online] Available from: <http://www.fao.org/3/a-i5199e.pdf>, 2015.
- 675 Mulla, D. J. and McBratney, A. B.: Soil spatial variability., 2001.
- Nachtergaele, F., Velthuisen, H. Van, Verelst, L., Batjes, N., Dijkshoorn, K., Engelen, V. Van, Fischer, G., Jones, A., Montanarella, L., Petri, M., Prieler, S., Teixeira, E., Wiberg, D. and Shi, X.: Harmonized World Soil Database (version 1), *Soil Sci.*, p.38, doi:3123, 2009.
- 680 Nauman, T. W. and Thompson, J. A.: Semi-automated disaggregation of conventional soil maps using knowledge driven data mining and classification trees, *Geoderma*, 213, 385–399, doi:10.1016/j.geoderma.2013.08.024, 2014.
- O'Geen, A., Walkinshaw, M. and Beaudette, D.: SoilWeb: A Multifaceted Interface to Soil Survey Information, *Soil Sci. Soc. Am. J.*, 81(4), 853–862, doi:10.2136/sssaj2016.11.0386n, 2017.
- Obeng, H. B.: The soils of Ghana and their potential for agricultural development., in *The 3rd Ghana International Trade Fair Seminar on Agricultural Development in Ghana.*, 1976.
- 685



- Obiri-nyarko, F.: Ameliorating Soil Acidity in Ghana : a Concise Review of Approaches, *ARNPN J. Sci. Technol.*, 2, 143–153, 2012.
- Owusu, S., Yigini, Y., Olmedo, G. F. and Omuto, C. T.: Spatial prediction of soil organic carbon stocks in Ghana using legacy data, *Geoderma*, 360(October 2018), 114008, doi:10.1016/j.geoderma.2019.114008, 2020.
- 690 Piikki, K., Söderström, M., Eriksson, J., John, J. M., Muthee, P. I., Wetterlind, J. and Lund, E.: Performance evaluation of proximal sensors for soil assessment in smallholder farms in Embu County, Kenya, *Sensors (Switzerland)*, 16(11), doi:10.3390/s16111950, 2016.
- Piikki, K., Söderström, M. and Stadig, H.: Local adaptation of a national digital soil map for use in precision agriculture, *Adv. Anim. Biosci.*, 8(2), 430–432, doi:10.1017/s2040470017000966, 2017.
- 695 Piikki, K., Wetterlind, J., Söderström, M. and Stenberg, B.: Perspectives on validation in digital soil mapping of continuous attributes—A review, *Soil Use Manag.*, 37(1), 7–21, doi:10.1111/sum.12694, 2021.
- Poggio, L., De Sousa, L. M., Batjes, N. H., Heuvelink, G. B. M., Kempen, B., Ribeiro, E. and Rossiter, D.: SoilGrids 2.0: Producing soil information for the globe with quantified spatial uncertainty, *Soil*, 7(1), 217–240, doi:10.5194/soil-7-217-2021, 2021.
- 700 Post, D. F., Huete, A. R. and Pease, D. S.: A comparison of soil scientist estimations and laboratory determinations of some Arizona soil properties, *J. Soil Water Conserv.*, 41(6), 421–424, 1986.
- Rawls, W. J. and Pachepsky, Y. A.: Using field topographic descriptors to estimate soil water retention, *Soil Sci.*, 167(7), 423–435, 2002.
- Ricciardi, V., Ramankutty, N., Mehrabi, Z., Jarvis, L. and Chookolingo, B.: How much of the world’s food do smallholders produce?, *Glob. Food Sec.*, 17(May), 64–72, doi:10.1016/j.gfs.2018.05.002, 2018.
- 705 Ritchie, H. and Roser, M.: *Crop Yields.*, 2013.
- Roecker, S. and Thompson, J.: Scale effects on terrain attribute calculation and their use as environmental covariates for digital soil mapping, in *Digital Soil Mapping: Bridging Research, Production, and Environmental Application*, edited by J. L. Boettinger, pp. 55–66, Springer. [online] Available from: <http://www.springerlink.com/index/K92180170H67J291.pdf>
- 710 (Accessed 11 March 2013), 2010.
- Salley, S. W., Herrick, J. E., Holmes, C. V, Karl, J. W., Levi, M. R. and Mccord, S. E.: A Comparison of Soil Texture-by-Feel Estimates: Implications for the Citizen Soil Scientist, , 1526–1537, doi:10.2136/sssaj2018.04.0137, 2018.
- Sanchez, P. A.: En route to plentiful food production in Africa, *Nat. Plants*, 1(January), 2014–2015,



doi:10.1038/nplants.2014.14, 2015.

715 Schoeneberger, P. J., Wysocki, D. A., Benham, E. C. and Staff, S. S.: Field Book for Describing and Sampling Soils, Natural Resources Conservation Service, National Soil Survey Center, Lincoln, NE., 2012.

Söderström, M., Piikki, K. and Cordingley, J.: Improved usefulness of continental soil databases for agricultural management through local adaptation, *South African J. Plant Soil*, 34(1), 35–45, doi:10.1080/02571862.2016.1166400, 2017.

720 Soil Survey Division Staff: Soil survey manual, United States Department of Agriculture, Handbook No. 18. pp. 120–125, edited by C. Ditzler, K. Scheffe, and H. C. Monger., 2017.

Sollins, P., Robertson, G. P. and Uehara, G.: Nutrient mobility in variable- and permanent-charge soils, *Biogeochemistry*, 6(3), 181–199, doi:10.1007/BF02182995, 1988.

725 de Sousa, L., Poggio, L., Batjes, N., Heuvelink, G., Kempen, B., Riberio, E. and Rossiter, D.: SoilGrids 2.0: producing quality-assessed soil information for the globe, *SOIL Discuss.*, (November), 1–37, doi:10.5194/soil-2020-65, 2020.

Thien, S. J.: A flow diagram for teaching texture-by-feel analysis, *J. Agron. Educ.*, 8(1), 54–55, 1979.

USDA-NRCS: National soil survey handbook, title 430-VI. [online] Available from: http://www.nrcs.usda.gov/wps/portal/nrcs/detail/soils/ref/?cid=nrcs142p2_054242, 2020.

730 Vincent, S., Lemercier, B., Berthier, L. and Walter, C.: Spatial disaggregation of complex Soil Map Units at the regional scale based on soil-landscape relationships, *Geoderma*, 311, 130–142, doi:10.1016/j.geoderma.2016.06.006, 2018.

Viscarra Rossel, R. A., Adamchuk, V. I., Sudduth, K. A., McKenzie, N. J. and Lobsey, C.: Proximal Soil Sensing. An Effective Approach for Soil Measurements in Space and Time, 1st ed., Elsevier Inc., 2011.

Vos, C., Don, A., Prietz, R., Heidkamp, A. and Freibauer, A.: Field-based soil-texture estimates could replace laboratory analysis, *Geoderma*, 267, 215–219, doi:10.1016/j.geoderma.2015.12.022, 2016.

735 Zalisk, K., Kaur, J. and Johnson, K.: Feed the Future Zone of Influence Surveys: Agriculture Interviewer's Training Manual, Washington, DC., 2018.